

SPOKANE, WASHINGTON

AL-403 (FAA)

19059

WAAS CH 93501 W26A	APP CRS 257°	Rwy Idg 8199 TDZE 2372 Apt Elev 2385
--	------------------------	---

RNAV (GPS) Y RWY 26
SPOKANE INTL (GEG)

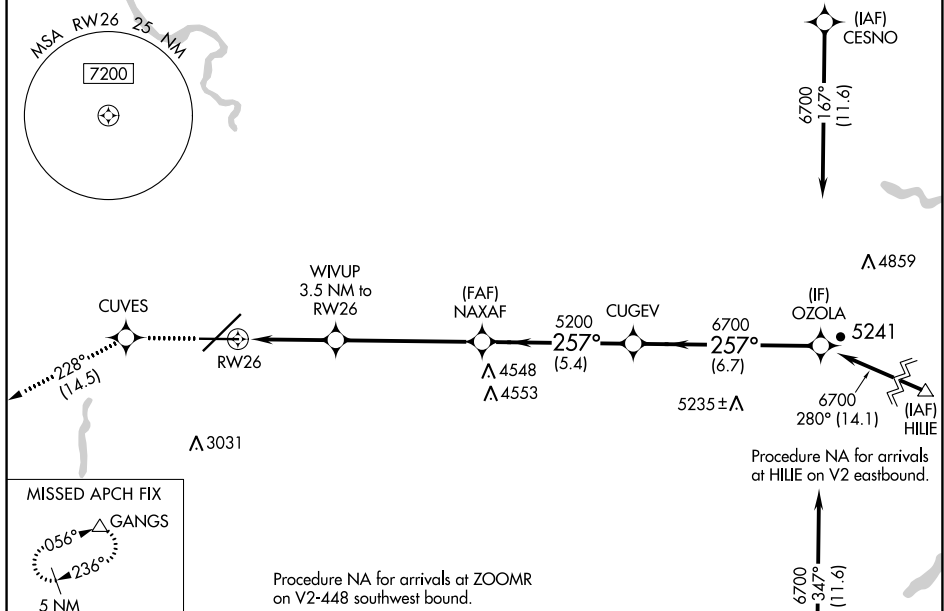
RNP APCH.



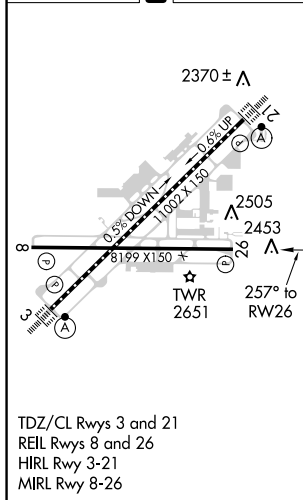
Rwy 26 helicopter visibility reduction below $\frac{3}{4}$ SM NA.
For uncompensated Baro-VNAV systems, LNAV/VNAV
NA below -18°C or above 54°C.

MISSED APPROACH: Climb to 5000 direct CUVES and on track 228° to GANGS and hold.

ATIS	SPOKANE APP CON	SPOKANE TOWER	GND CON	CLNC DEL
124.325 254.375	123.75 282.25 (205°-025°) 133.35 263.0 (026°-204°)	118.3 278.3	121.9 348.6	127.55



ELEV 2385	D	TDZE 2372
-----------	----------	-----------



5000 		CUVES 		tr 228° 			
<p>*LNAV only.</p> <p></p>				<p>WIVUP 3.5 NM to RW26</p>			
<p></p>				<p>NAXAF 5200</p> <p>CUGEV 6700</p> <p>OZOLA 6700</p> <p>GP 3.00° TCH 48</p>			
CATEGORY		A		B		C	
LPV DA		2688-1		316 (400-1)			
LNAV/ VNAV		DA		2911-1½		539 (600-1½)	
LNAV MDA		2920-1		548 (600-1)		2920-1⅝ 548 (600-1⅝)	
CIRCLING		2960-1 575 (600-1)		2980-1 595 (600-1)		3300-2¾ 915 (1000-2¾) 3400-3 1015 (1100-3)	

SPOKANE, WASHINGTON
Amdt 4B 03JAN19

47°37'N-117°32'W

SPOKANE INTL (GEG)
RNAV (GPS) Y RWY 26

NW-1, 31 DEC 2020 to 28 JAN 2021