

## ILS or LOC RWY 15

LOC I-GRF <b>108.3</b> Chan <b>20</b>	APCH CRS <b>151°</b>	Rwy Idg TDZE Arpt Elev <b>6124</b> <b>300</b> <b>301</b>
---	-------------------------	---

AL-413 [USA]

GRAY AAF (KGRF)

RNAV1 - GPS from SEA VORTAC.

DME required for civil use. For non-RNAV aircraft, RADAR required from SEA VORTAC.

⚠ \*When ALS inop when using McChord AFB altimeter setting, increase LOC CAT C/D vis to RVR 55.



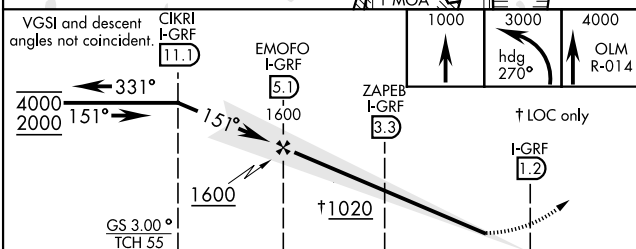
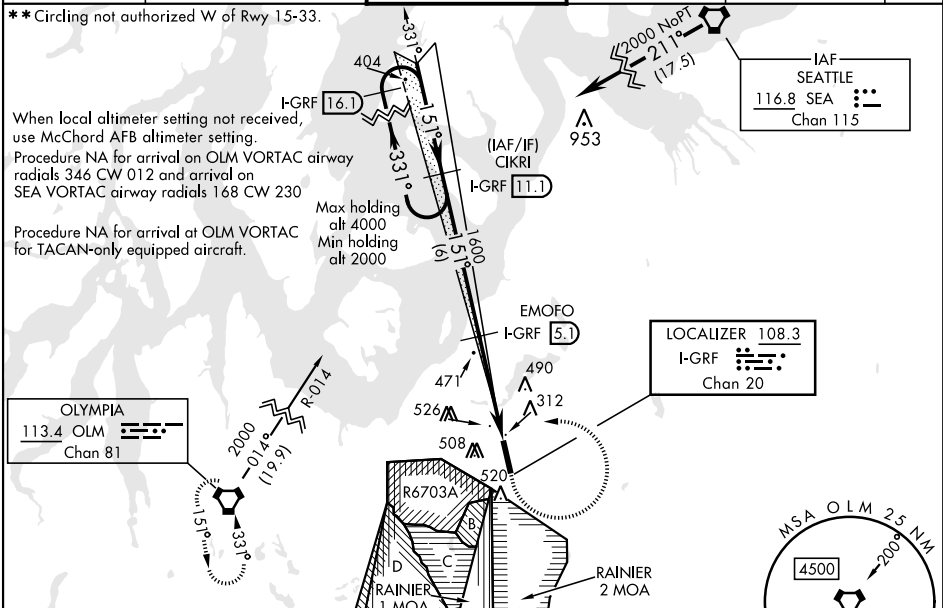
MISSED APPROACH: Climb to 1000, then climbing left turn to 3000 on hdg 270° and OLM VORTAC R-014, then continue climb to 4000 on OLM R-014 to OLM and hold.

ATIS <b>124.65 306.2</b>	SEATTLE APP CON <b>120.1 290.9</b>	GRAY TOWER ★ <b>119.325 (CTAF) 256.8</b>	GND CON <b>121.9 290.2</b>	CLNC DEL <b>121.9 290.2</b>	PAR
-----------------------------	---------------------------------------	---	-------------------------------	--------------------------------	-----

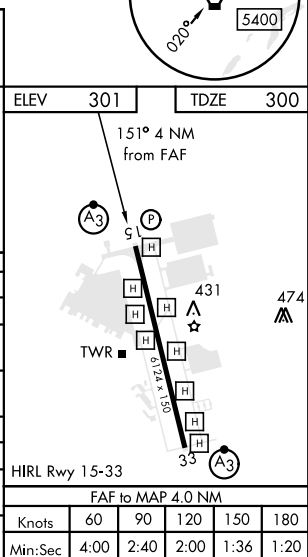
\*\*Circling not authorized W of Rwy 15-33.

When local altimeter setting not received, use McChord AFB altimeter setting.  
Procedure NA for arrival on OLM VORTAC airway radials 346 CW 012 and arrival on SEA VORTAC airway radials 168 CW 230

Procedure NA for arrival at OLM VORTAC for TACAN-only equipped aircraft.



CATEGORY	A	B	C	D
S-ILS 15	500/24		200	(200-½)
S-LOC 15	640/24	340 (400-½)	640/26	340 (400-½)
CIRCLING **	840-1	539 (600-1)	840-1½ 539 (600-1½)	920-2 619 (700-2)
McCHORD FLD ALTIMETER SETTING MINIMUMS				
S-ILS 15	516/24		216	(300-½)
S-LOC 15*	660/24	360 (400-½)	660/35	360 (400-¾)
CIRCLING **	860-1	559 (600-1)	860-1½ 559 (600-1½)	940-2 639 (700-2)



## ILS or LOC RWY 15