

FORT LEWIS, WASHINGTON

RNAV (GPS) RWY 33

APCH CRS	Rwy Idg	6124
331°	TDZE	301
	Arpt Elev	301

AL-413 (USA)

GRAY AAF (KGRF)

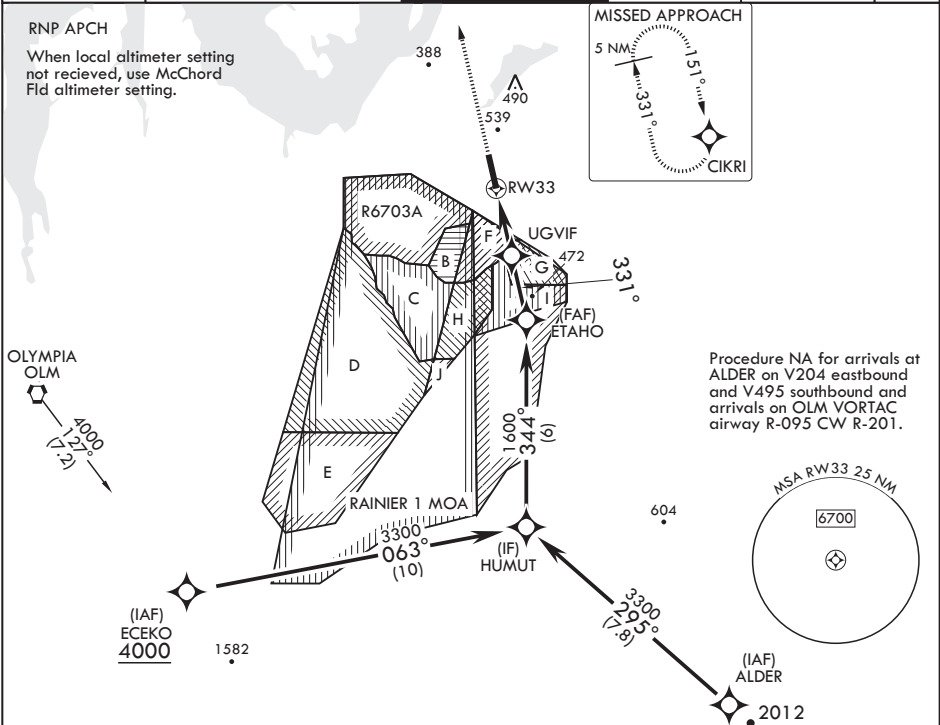
⚠ * Circling not authorized W of Rwy 15-33.

SSALR



MISSED APPROACH: Climb to 2000 direct CIKRI and hold.

ATIS 124.65 306.2	SEATTLE APP CON/DEP CON 120.1 290.9	TOWER ★ 119.325 (CTAF) 256.8	GND CON 121.9 290.2	CLNC DEL 121.9 290.2	PAR
----------------------	--	---------------------------------	------------------------	-------------------------	-----

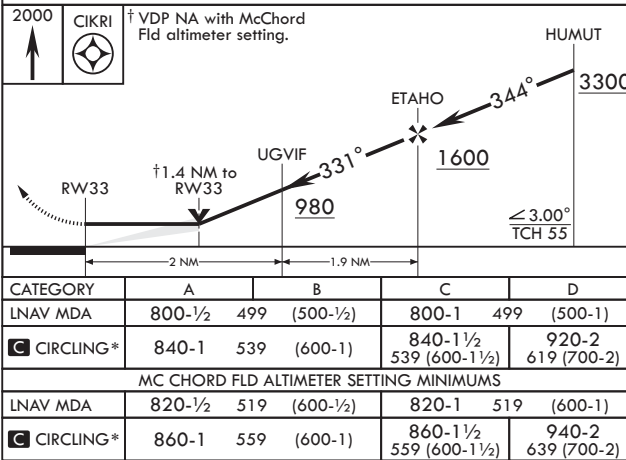


2000 **CIKRI**

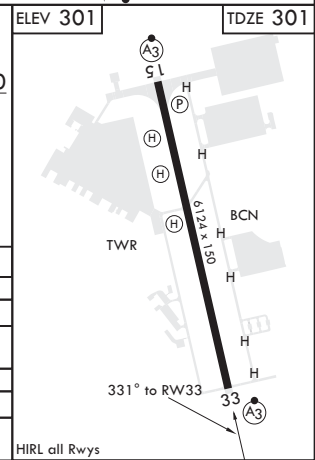
† VDP NA with McChord Fld altimeter setting.

HUMUT

ELEV 301 **TDZE 301**



CATEGORY	A	B	C	D
LNAV MDA	800-½ 499 (500-½)	800-1 499 (500-1)	840-1½ 539 (600-1½)	920-2 619 (700-2)
C CIRCLING*	840-1 539 (600-1)	840-1½ 539 (600-1½)	860-1 559 (600-1)	860-1½ 559 (600-1½)
MC CHORD FLD ALTIMETER SETTING MINIMUMS				
LNAV MDA	820-½ 519 (600-½)	820-1 519 (600-1)	860-1½ 559 (600-1½)	940-2 639 (700-2)
C CIRCLING*	860-1 559 (600-1)	860-1½ 559 (600-1½)	880-1 579 (600-1)	880-1½ 579 (600-1½)



FORT LEWIS, WASHINGTON

47°05'N - 122°35'W

GRAY AAF (KGRF)

Amndt 2 10OCT19

RNAV (GPS) RWY 33

NW-1, 31 DEC 2020 to 28 JAN 2021

NW-1, 31 DEC 2020 to 28 JAN 2021