

NW-1, 31 DEC 2020 to 28 JAN 2021

ARRIVAL ROUTE DESCRIPTION

ELLENSBURG TRANSITION (ELN.ELN3)

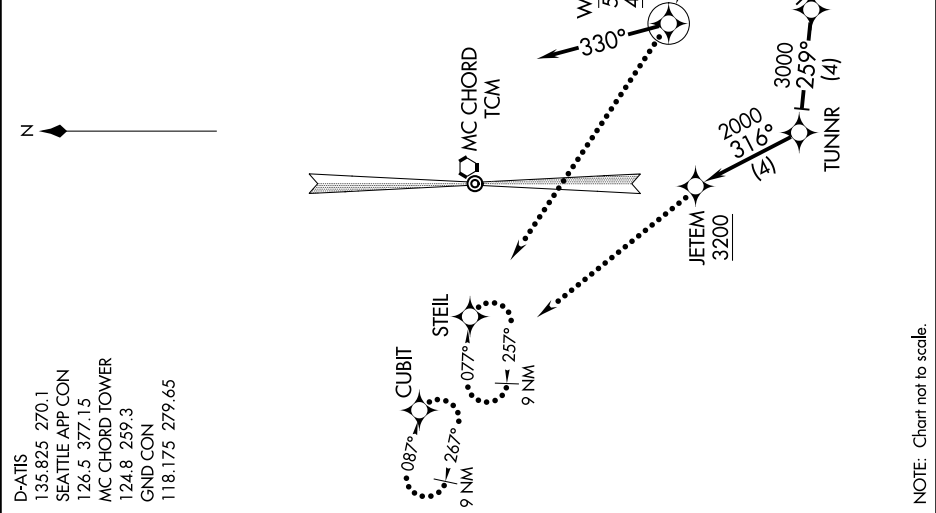
LANDING RUNWAY 16: From KPOWW on track 275° to cross WAALP between 4700 and 5700, then on heading 330° or as assigned by ATC. Expect RADAR vectors to final approach course.

LANDING RUNWAY 34: From KPOWW on track 210° to cross OWSIN at or above 5600, then on track 259° to TUNNR, then on track 316° to cross JETEM at/above 3200. Expect ILS or visual approach.

LOST COMMUNICATIONS

RUNWAY 16: At WAALP, proceed direct STEIL and execute approach, if unable hold as published, maintain 4000, squawk appropriate beacon code.

RUNWAY 34: At JETEM, execute approach, if unable, proceed direct CUBIT and hold as published, maintain 4000, squawk appropriate beacon code.



NW-1, 31 DEC 2020 to 28 JAN 2021