

TACOMA, WASHINGTON

ILS or LOC Z RWY 16

LOC I-MAR 109.9	APCH CRS 165°	Rwy Idg 10,108 TDZE 286 Arpt Elev 322
---------------------------	-------------------------	------------------------------------------------------------------

AL-414 [USAF]

MC CHORD FIELD (KTCM)

RADAR or DME required.

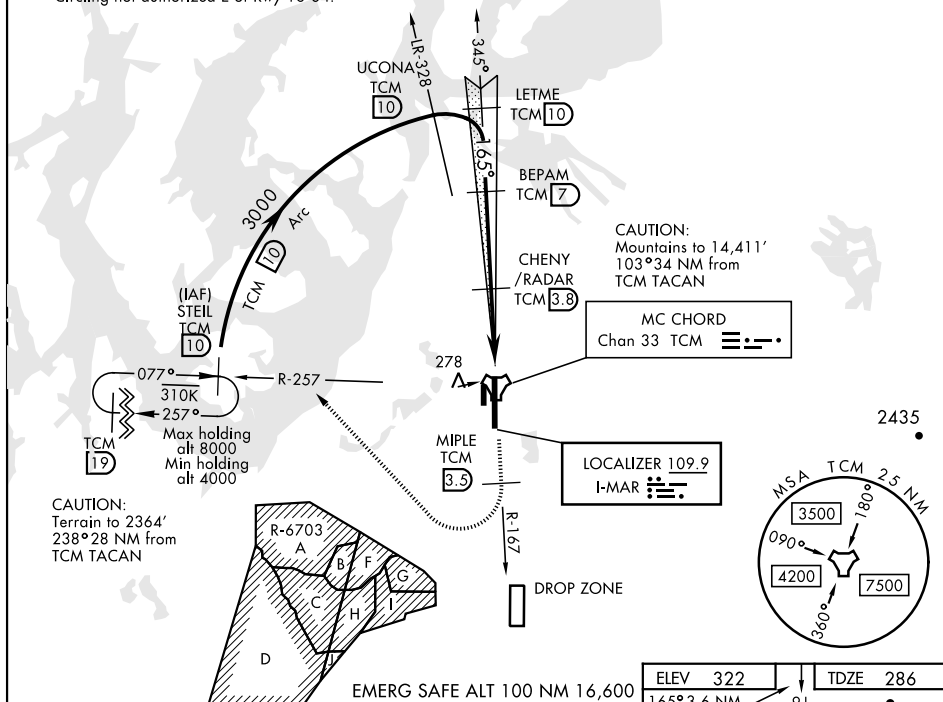
- ▼ * When ALS inop, increase RVR to 40, vis to $\frac{3}{4}$ mile.
 ** When ALS inop, increase CAT AB RVR to 55, vis to 1 mile, CAT CDE vis to $\frac{1}{3}$ miles.



MISSED APPROACH: Climb to 4000 on TCM TACAN R-167. At 3.5 DME turn right via 295° course to intercept TCM R-257 to STEIL and hold. Continue climb in hold to 4000.

ATIS 135.825 270.1	SEATTLE APP CON 126.5 377.15	MCCHORD TOWER 124.8 259.3	GND CON 118.175 279.65
------------------------------	----------------------------------------	-------------------------------------	----------------------------------

*** Circling not authorized E of Rwy 16-34.



	ELEV 322		TDZE 286	
	4000		165° 3.6 NM from FAF	
	TCM R-167		MIPLE tr 295° Intcp R-257	
	3.5		VGSI and ILS glideslope not coincident	
	STEIL R-257		ASSAULT STRIP	
	UCONA LR-328		TWR	
	LETME Intcp Lczz		461	
	BEPAM		TDZL/CL Rwy 34	
	CHENY/RADAR		HIRL Rwy 16-34	
	FABOD		FAF to MAP 3.1 NM	
	3.1 NM		Knots	
	5		60 90 120 150 180	
	S-ILS 16 *		Min:Sec	
	800/24 514 (500-½)		3:06 2:04 1:33 1:14 1:02	
	S-LOC 16 **			
	800/24 514 (500-½)			
	CIRCLING ***			
	940-1 618 (700-1)			
	940-1 618 (700-1¾)			
	940-2 618 (700-2)			
	1020-2 698 (700-2½)			

TACOMA, WASHINGTON

47°08'N-122°29'W

MC CHORD FIELD (KTCM)

Amdt 3 03DEC20

ILS or LOC Z RWY 16