

RNAV (GPS) RWY 16

APCH CRS	Rwy ldg
165°	10,108
	TDZE
	286
	Arpt Elev
	322

AL-414 [USAF]

MC CHORD FIELD (KTCM)

⚠

* When ALS inop, increase CAT AB vis to 1 mile,
CAT CDE vis to 1½ miles.

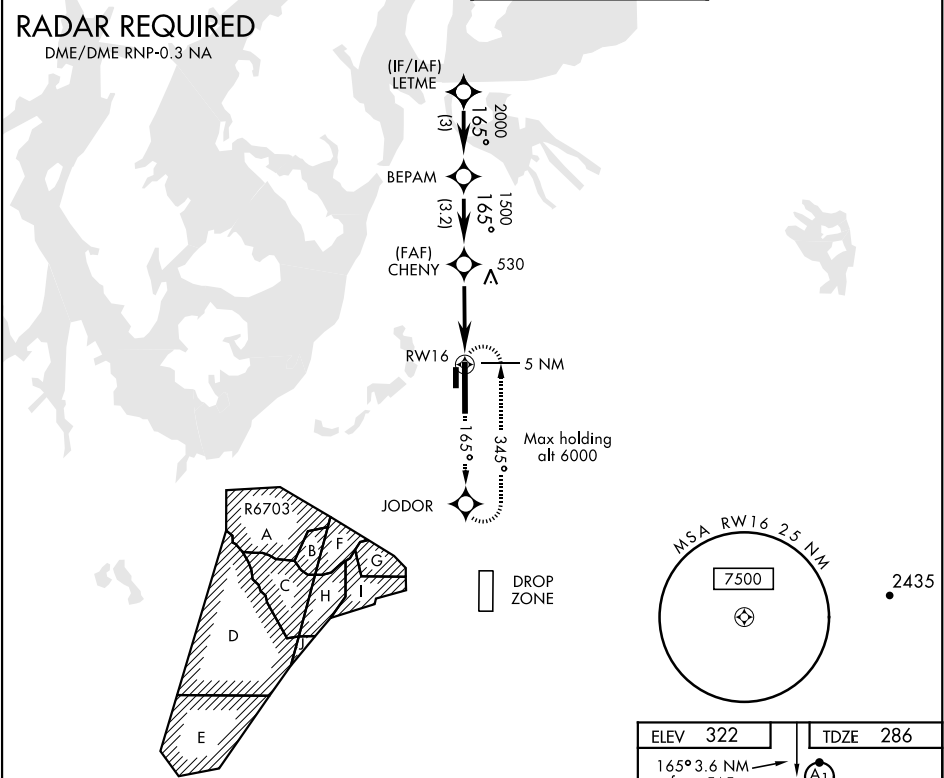
** Circling not authorized E of rwy 16-34.

ALSF-1

(A1)

MISSED APPROACH: Climb to 4000 direct JODOR
and hold. Continue climb in hold to 4000.

ATIS 135.825 270.1	SEATTLE APP CON 126.5 377.15	MCCHORD TOWER 124.8 259.3	GND CON 118.175 279.65
-----------------------	---------------------------------	------------------------------	---------------------------



EMERG SAFE ALT 100 NM 16,600

4000

JODOR

LETME

BEPAM

CHENY

RWY 16

3.00°

TCH 68

3.6 NM

CATEGORY	A	B	C	D	E
LNAV MDA *	780/24	494 (500-½)	780/50	494 (500-1)	
CIRCLING **	940-1	618 (700-1)	940-1½ 618 (700-1½)	940-2 618 (700-2)	1020-2½ 698 (700-2½)

ELEV 322

TDZE 286

165° 3.6 NM from FAF

ASSAULT STRIP

TWR

461

HIRL Rwy 16-34

TDZL/CL Rwy 34

RNAV (GPS) RWY 16

NW-1, 31 DEC 2020 to 28 JAN 2021

NW-1, 31 DEC 2020 to 28 JAN 2021