

RNAV (GPS) RWY 34

APCH CRS	Rwy ldg
345°	10,108
TDZE	322
Arpt Elev	322

AL-414 [USAF]

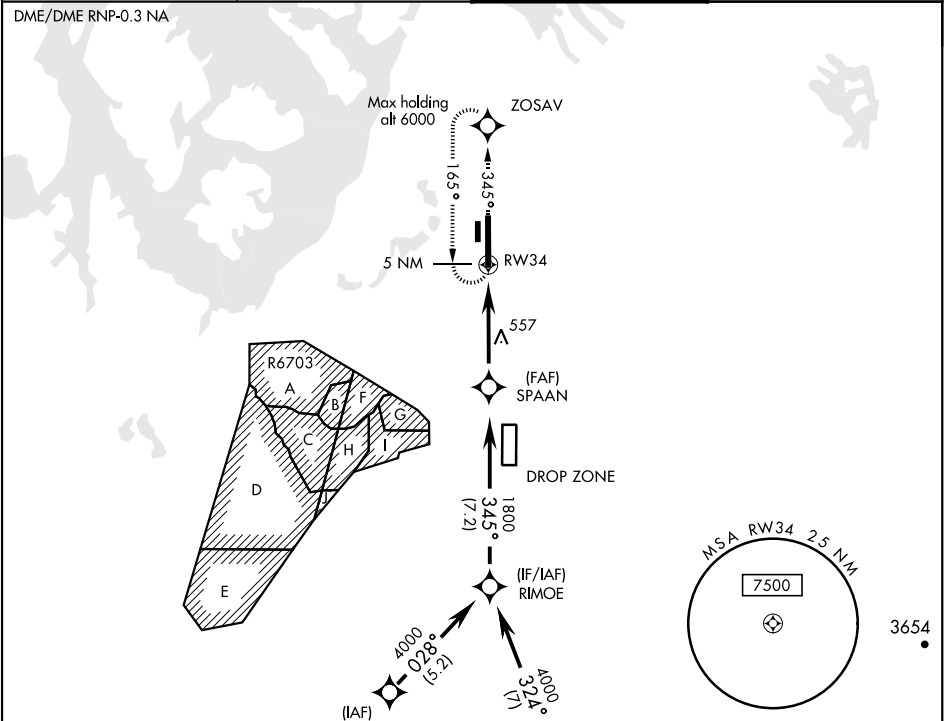
MC CHORD FIELD (KTCM)

⚠ * When ALS inop, increase CAT AB RVR to 55, vis to 1 mile; CAT CDE vis to 1 3/4 miles.
** Circling not authorized E of rwy 16-34.

ALSF-2

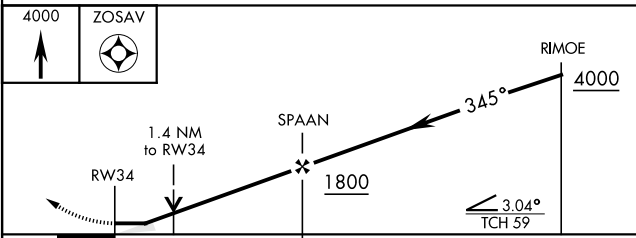
MISSED APPROACH: Climb to 4000 direct ZOSAV and hold, continue climb in hold to 4000.

ATIS 135.825 270.1	SEATTLE APP CON 126.5 377.15	MCCHORD TOWER 124.8 259.3	GND CON 118.175 279.65
-----------------------	---------------------------------	------------------------------	---------------------------

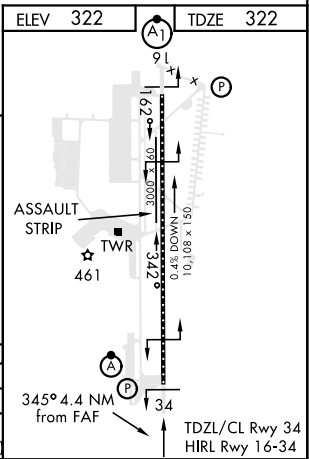


RADAR REQUIRED

EMERG SAFE ALT 100 NM 16,600



CATEGORY	A	B	C	D	E
LNAV MDA *	820/24	498 (500-1/2)	820/50	498 (500-1)	
CIRCLING **	940-1	618 (700-1)	940-1 3/4 618 (700-1 3/4)	940-2 618 (700-2)	1020-2 1/2 698 (700-2 1/2)



RNAV (GPS) RWY 34

NW-1, 31 DEC 2020 to 28 JAN 2021

NW-1, 31 DEC 2020 to 28 JAN 2021