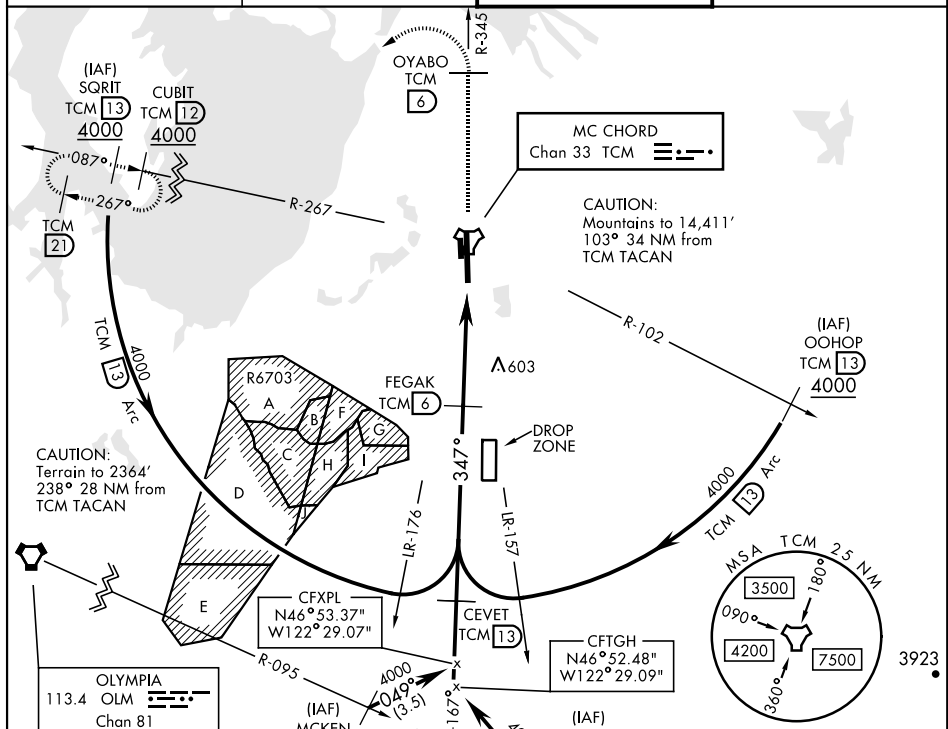


TACOMA, WASHINGTON

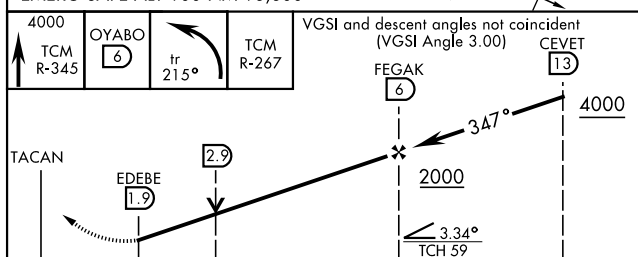
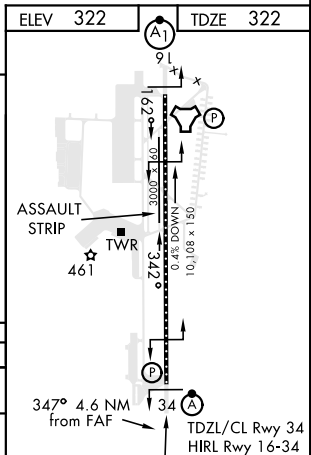
TACAN RWY 34

TACAN TCM Chan 33	APCH CRS 347°	Rwy Idg 10,108 TDZE 322 Arpt Elev 322	AL-414 [USAF]	MC CHORD FIELD (KTCM)
▼ * When ALS inop, increase CAT AB RVR to 55, vis to 1 mile, CAT CD vis to 1 1/2 miles. ** Circling not authorized E of Rwy 16-34.			ALS-F-2 	MISSED APPROACH: Climb to 4000 on TCM TACAN R-345 to OYABO, then turn left via 215° course to intercept TCM R-267 to CUBIT and hold. Cross OYABO at or above 3000. Continue climb in hold to 4000.

ATIS	SEATTLE APP CON	MCCHORD TOWER	GND CON
135.825 270.1	126.5 377.15	124.8 259.3	118.175 279.65



EMERG SAFE ALT 100 NM 16,600

[illegible]

TACOMA, WASHINGTON

47°08'N-122°29'W

MC CHORD FIELD (KTCM)

Amdt 4 10SEP20

TACAN RWY 34

NW-1, 31 DEC 2020 to 28 JAN 2021

NW-1, 31 DEC 2020 to 28 JAN 2021