

LOC I-ALW	APP CRS	Rwy ldg	6527
111.7	196°	TDZE	1194
		Apt Elev	1194

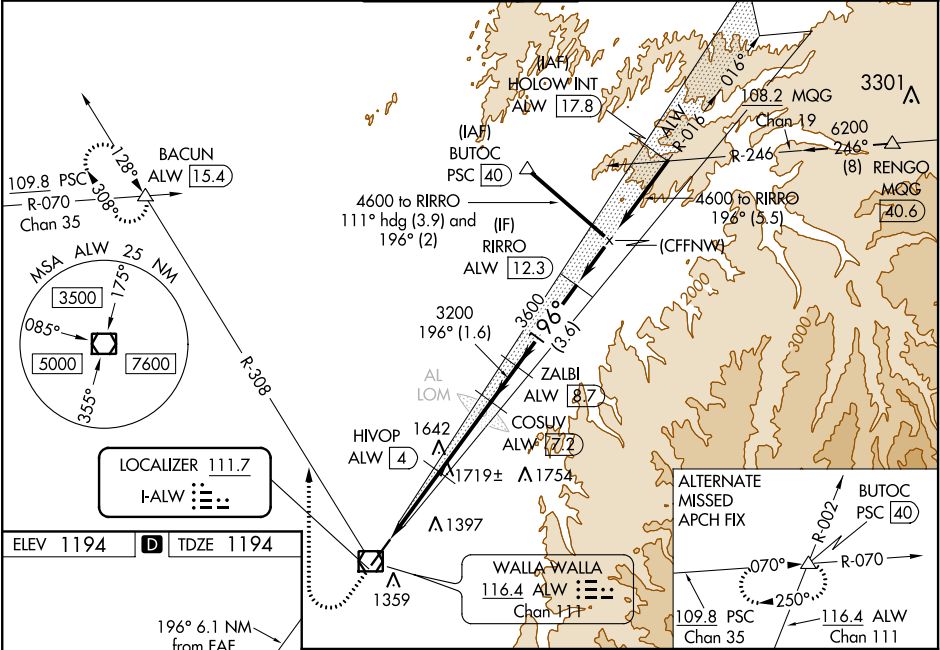
ILS Z or LOC/DME RWY 20
WALLA WALLA RGNL (ALW)

⚠ DME required. When local altimeter setting not received, use Pendleton altimeter setting and increase all DA and all MDA 120 feet, increase S-ILS 20 visibility to RVR 3200, increase S-LOC 20 Cat A visibility 3/8 mile, Cat C and D visibility 1/4 mile and Circling Cat A and C/D visibility 1/4 mile. VDP NA when using Pendleton altimeter setting. For inoperative MALSRL, when using Pendleton altimeter setting, increase S-ILS 20 all Cts visibility to 5000 RVR. DME from ALW VOR/DME. Simultaneous reception of I-ALW and ALW VOR/DME required. For inoperative MALSRL, increase S-LOC 20 Cat C/D visibility 3/4 mile. # RVR 1800 authorized with use of FD or AP or HUD to DA.

MALSRL

MISSED APPROACH: Climb to 1800 then climbing right turn to 4000 on heading 340° and ALW VOR/DME R-308 to BACUN INT/ALW 15.4 DME and hold.

ASOS	CHINOOK APP CON *	WALLA WALLA TOWER *	GND CON	UNICOM
135.875	133.15 379.15	118.5 (CTAF) 289.4	121.6 289.4	122.95



ELEV 1194	TDZE 1194
196° 6.1 NM from FAF	
REIL Rwy 20	HIRL Rwy 2-20
1800	4000
ALW R-308	BACUN
*LOC only.	*ALW
ALW 1	HIVOP ALW 4
3200	3200
2400*	3600
196°	4600
2.3 NM	0.7 NM
3.1 NM	1.6 NM
3.6 NM	
CATEGORY	A
S-ILS 20 #	1394/24 200 (200-1/2)
S-LOC 20	1980/24 786 (800-1/2)
CIRCLING	1980-1 786 (800-1)
	2120-2 3/4 926 (1000-2 3/4)
	2300-3 1106 (1200-3)

NW-1, 31 DEC 2020 to 28 JAN 2021

NW-1, 31 DEC 2020 to 28 JAN 2021