

OAK HARBOR, WASHINGTON

RNAV (GPS) RWY 14

WAAS CH 50004 W14A	APCH CRS 137°	Rwy Idg 8000 TDZE 39 Arpt Elev 47
---------------------------------	-------------------------	--

AL-451 (USN)

WHIDBEY ISLAND NAS (AULT FLD) (KNUW)

T * When ALS inop, increase CAT ABCD vis to 3/4 mile.
 ** When ALS inop, increase CAT A vis to 3/4 mile, CAT BCD vis to 7/8 mile.
 *** When ALS inop, increase CAT AB vis to 1 mile, CAT CD vis to 1 1/8 miles.



MISSED APPROACH: Climb to 3500 direct FIDPO, and on track 218° to WADPA and hold.

ATIS
134.15 281.5

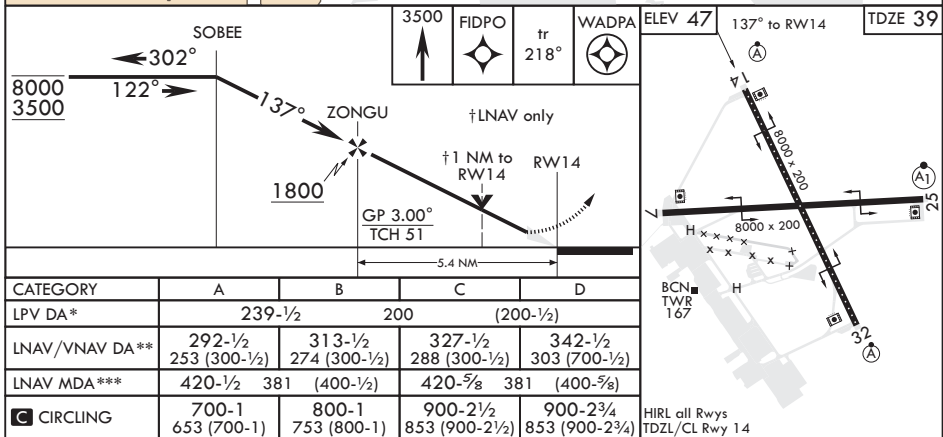
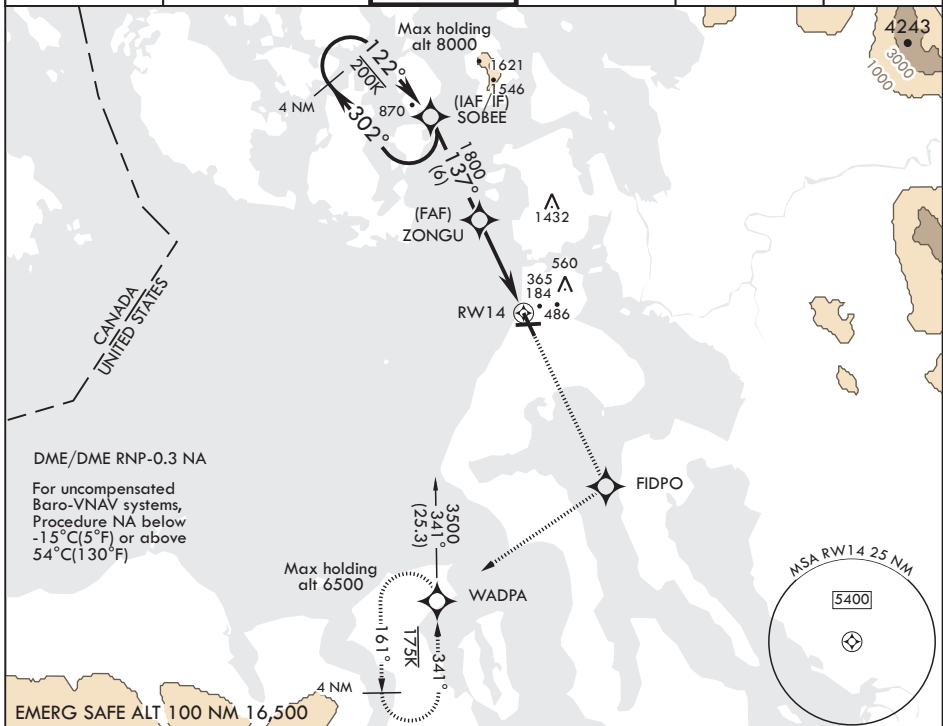
APP CON/DEP CON
118.2 285.65 W
120.7 270.8 E

TOWER
127.9 340.2

GND CON
121.75 336.4

CLNC DEL
135.1 379.9

ASR/PAR



OAK HARBOR, WASHINGTON

48°21'N - 122°39'W

WHIDBEY ISLAND NAS (AULT FLD) (KNUW)

Amdt 3 21MAY20

RNAV (GPS) RWY 14

NW-1, 31 DEC 2020 to 28 JAN 2021

NW-1, 31 DEC 2020 to 28 JAN 2021