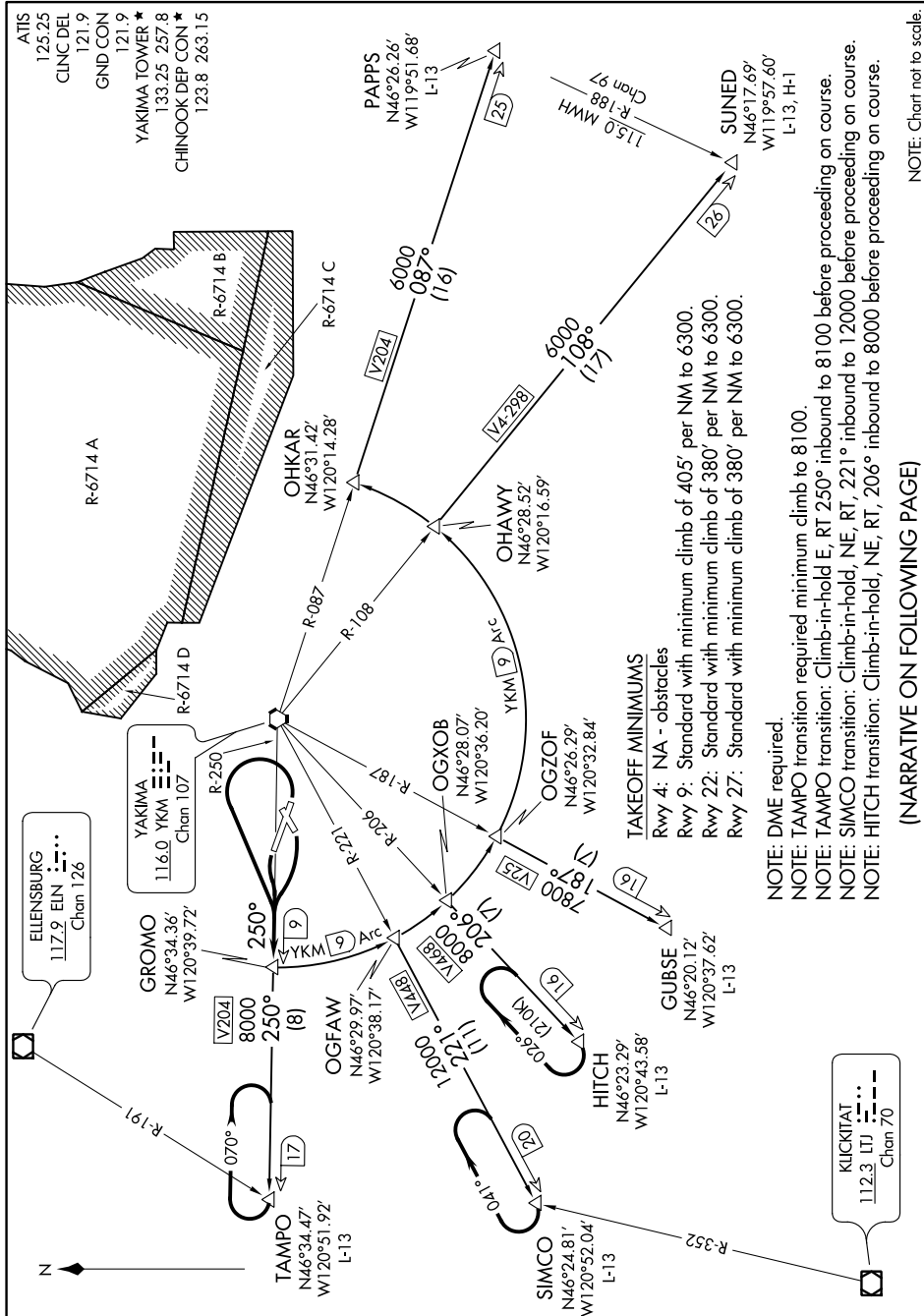


GROMO FOUR DEPARTURE

YAKIMA AIR TERMINAL/MCALLISTER FIELD (YKM)

AL-465 (FAA)

YAKIMA, WASHINGTON



NOTE: Chart not to scale.

(NARRATIVE ON FOLLOWING PAGE)

NW-1, 31 DEC 2020 to 28 JAN 2021

NOTE: DME required.

NOTE: TAMPO transition required minimum climb to 8100.

NOTE: TAMPO transition: Climb-in-hold E, RT 250° inbound to 8100 before proceeding on course.

NOTE: SIMCO transition: Climb-in-hold, NE, RT, 221° inbound to 12000 before proceeding on course.

NOTE: HITCH transition: Climb-in-hold, NE, RT, 206° inbound to 8000 before proceeding on course.

GROMO FOUR DEPARTURE

(GROMO4.GROMO) 10NOV16

YAKIMA, WASHINGTON

YAKIMA AIR TERMINAL/MCALLISTER FIELD (YKM)