

LOC/DME I-YKM <b>110.1</b> Chan <b>38</b>	APP CRS <b>274°</b>	Rwy Idg TDZE Apt Elev <b>7604</b> <b>1068</b> <b>1099</b>
---	------------------------	--

# ILS or LOC RWY 27

YAKIMA AIR TERMINAL/MCALLISTER FIELD (YKM)

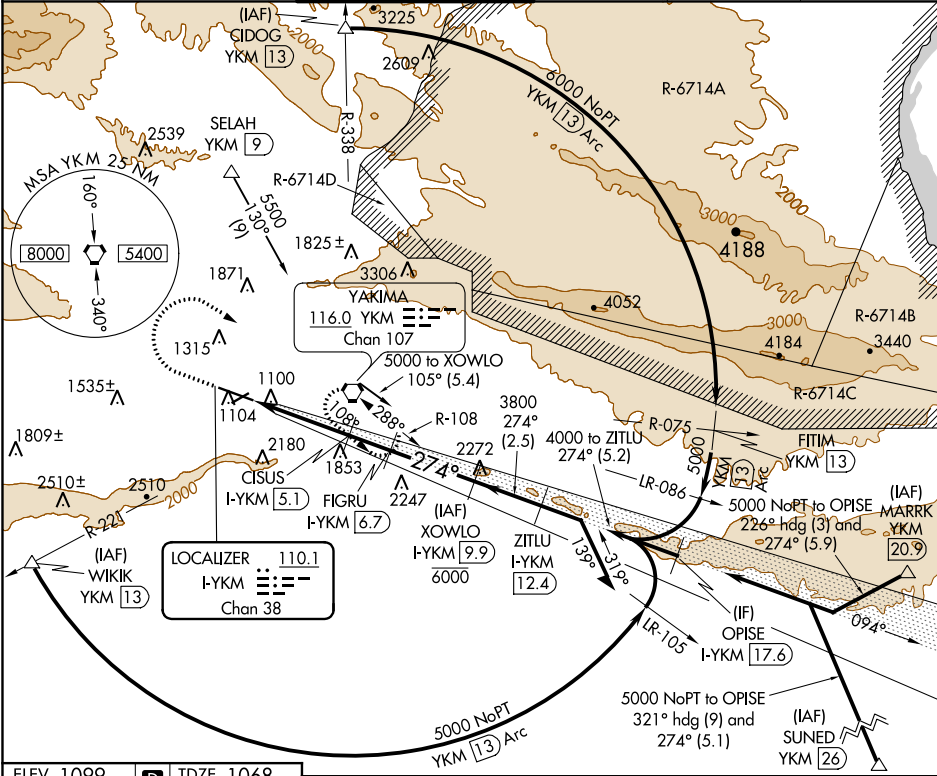
DME required for procedure entry. DME required for LOC only.

When local altimeter setting not received, procedure NA. Circling NA south of Rwy 9 and 27. For inop ALS, increase S-LOC 27 Cats C/D visibility to 2 SM. For inop ALS, increase S-ILS 27 all Cats visibility to 1½ SM. #RVR 1800 authorized with use of FD or AP or HUD to DA.

MALSR

MISSED APPROACH: Climb to 2900 then climbing right turn to 4900 direct YKM. VORTAC and hold, continue climb-in-hold to 4900. # Missed approach requires minimum climb of 275 feet per NM to 3600.

ATIS <b>125.25</b>	CHINOOK APP CON* <b>123.8 263.15</b>	YAKIMA TOWER* <b>133.25 (CTAF) 0 257.8</b>	GND CON <b>121.9</b>	CLNC DEL <b>121.9</b>	UNICOM <b>122.95</b>
-----------------------	---	---	-------------------------	--------------------------	-------------------------



ELEV 1099 TDZE 1068

274° 8.5 NM from FAF

TWR 1159

7604 X 150

3835 X 150

0.7% UP

0.5% UP

AS

2900 4900 YKM

\* LOC only

I-YKM 1.4

\* I-YKM 3.5

CISUS I-YKM 5.1

FIGRU I-YKM 6.7

XOWLO I-YKM 9.9

ZITLU I-YKM 12.4

OPISE I-YKM 17.6

SUNED I-YKM 26

Remain within 10 NM

094°

274°

4000

3800

2780\*

2280\*

2.1 NM

1.6 NM

1.6 NM

3.2 NM

2.5 NM

GS 3.00° TCH 56

CATEGORY	A	B	C	D
S-ILS 27 #	1268/24	200 (200-½)		
S-ILS 27	1713-1½	645 (700-1½)		
S-LOC 27	1780/24	712 (700-½)	1780-1½	712 (700-1½)
CIRCLING	1780-1	681 (700-1)	1940-2½	2280-3
			841 (900-2½)	1181 (1200-3)

MIRL Rwy 4-22  
HIRL Rwy 9-27  
REIL Rwy 4, 9, and 22

NW-1, 31 DEC 2020 to 28 JAN 2021

NW-1, 31 DEC 2020 to 28 JAN 2021