

APP CRS	Rwy Idg	7604
274°	TDZE	1068
	Apt Elev	1099

RNAV (RNP) Y RWY 27

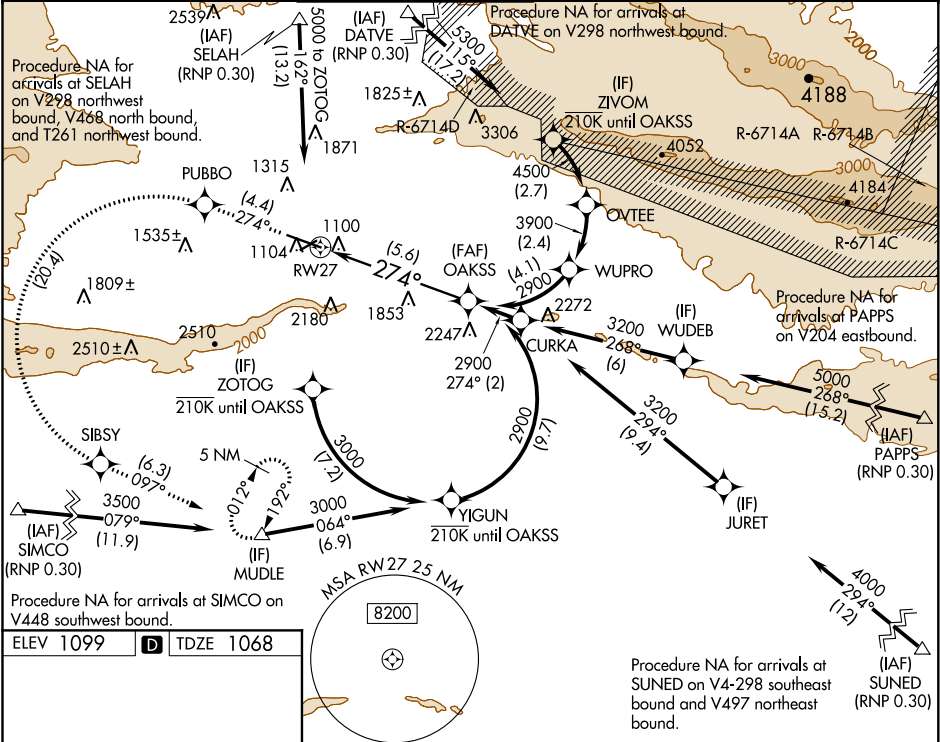
YAKIMA AIR TERMINAL/MCALLISTER FIELD (YKM)

For uncompensated Baro-VNAV systems, procedure NA below -17°C (2°F) or above 54°C (130°F).
RF required. GPS required. DATVE transition NA when R-6714 A, C, D active.

MALSR

MISSED APPROACH: Climb to 5100 on track 274° to PUBBO left turn to SIBSY and on track 097° to MUDLE and hold.
* Missed approach requires minimum climb of 425 feet per NM to 3400.

ATIS	CHINOOK APP CON★	YAKIMA TOWER★	GND CON	CLNC DEL	UNICOM
125.25	123.8 263.15	133.25 (CTAF) 257.8	121.9	121.9	122.95



TWR 1159

7604 X 150





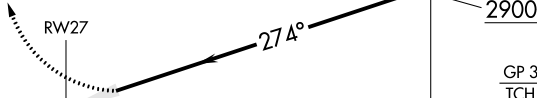
3835 X 150

274° to RWY27

MIRL Rwy 4-22

HIRL Rwy 9-27

REIL Rwy 4, 9, and 22

5100	PUBBO	SIBSY	MUDLE	OAKSS
 tr 274°			tr 097° 	2900
See planview for multiple IF locations				
				
CATEGORY	A	B	C	D
RNP 0.30 DA*	1418/30 350 (400-5%)			
RNP 0.30 DA	1845-2¼ 777 (800-2¼)			
AUTHORIZATION REQUIRED				