

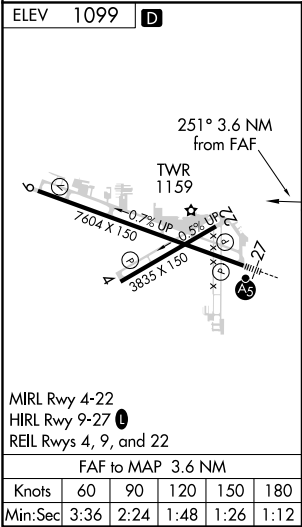
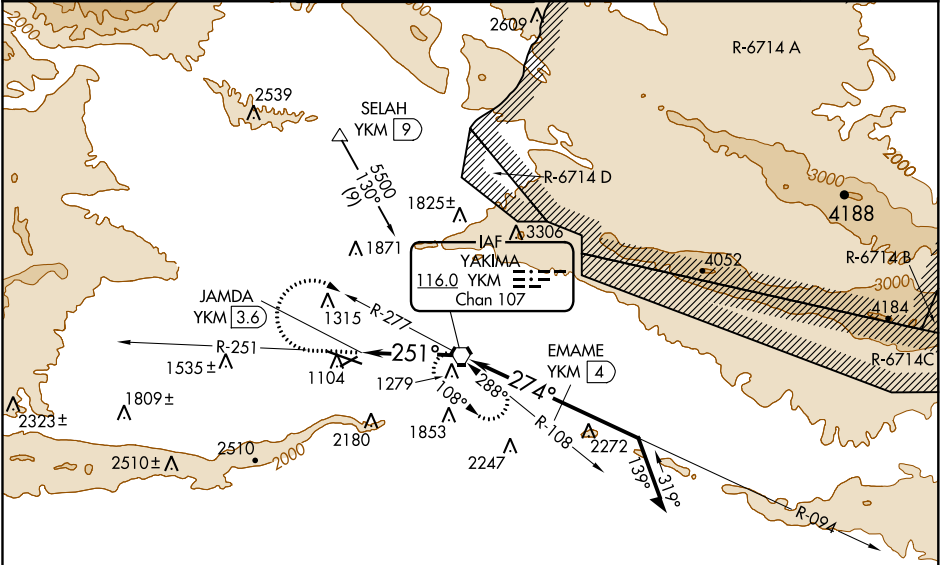
VORTAC YKM <b>116.0</b> Chan <b>107</b>	APP CRS <b>251°</b>	Rwy Idg TDZE Apt Elev <b>1099</b>	N/A N/A <b>1099</b>
---	------------------------	--	---------------------------

VOR-A

YAKIMA AIR TERMINAL/MCALLISTER FIELD (YKM)

<p><b>V</b> DME required. <b>A</b> Circling not authorized south of Rwy 9-27. When local altimeter setting not received, procedure NA.</p>	<p>MISSED APPROACH: Climb to 2600 via YKM VORTAC R-251 then climbing right turn to 4600 via YKM VORTAC R-277 to YKM VORTAC and hold, continue climb-in-hold to 4600.</p>
--	--

ATIS <b>125.25</b>	CHINOOK APP CON★ <b>123.8 263.15</b>	YAKIMA TOWER★ <b>133.25 (CTAF) 0 257.8</b>	GND CON <b>121.9</b>	CLNC DEL <b>121.9</b>	UNICOM <b>122.95</b>
-----------------------	---	---	-------------------------	--------------------------	-------------------------



	2600	4600	YKM		
	YKM R-251	YKM R-277	YKM		
	JAMDA YKM 3.6	YKM VORTAC	10000		
			Remain within 10 NM		
			094°	274°	4500
			2800	3300	
			3.6 NM	4 NM	
CATEGORY	A	B	C	D	
	1840-1	1840-1¼	1940-2½	2280-3	
<b>CIRCLING</b>	741 (800-1)	741 (800-1¼)	841 (900-2½)	1181 (1200-3)	

VOR-A

NW-1, 31 DEC 2020 to 28 JAN 2021

NW-1, 31 DEC 2020 to 28 JAN 2021