

WAAS
CH **58001**
W14A

APP CRS
141°

Rwy Idg **10302**
TDZE **4091**
Apt Elev **4095**

RNAV (GPS) RWY 14

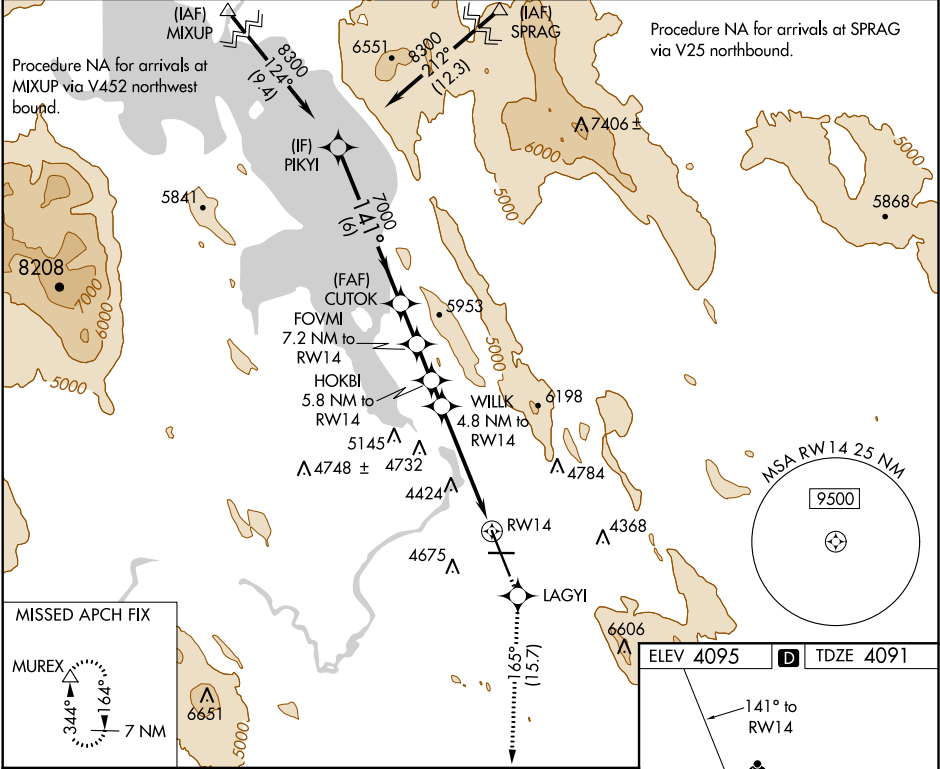
CRATER LAKE-KLAMATH RGNL (LMT)

Inop table does not apply to LPV all Cats, and LNAV Cats B and C. DME/DME RNP-0.3 NA. Helicopter visibility reduction below ¾ SM NA. Circling NA for Cat D east of Rwy 14-32.

MALSF

MISSED APPROACH: Climb to 9300 direct LAGYI and via track 165° to MUREX and hold, continue climb-in-hold to 9300.

ATIS 126.5 263.0	KINGSLEY APP CON 123.675 270.8	KINGSLEY TOWER★ 133.975 (CTAF) 0 257.8	GND CON 121.9 348.6	UNICOM 122.95
----------------------------	--	--	-------------------------------	-------------------------



PIKYI

CUTOK

FOVMI

HOKBI

WILLK

LAGYI

MUREX

8300

741°

7000

*6480

*6000

*5680

2.5 NM to RW14

RW14

6 NM

1.6 NM

1.4 NM

1 NM

2.3 NM

2.5 NM

CATEGORY

A

B

C

D

LPV

DA

4635-2

544 (600-2)

LNAV

MDA

4920-¾
829 (900-¾)

4920-1¼
829 (900-1¼)

4920-2½
829 (900-2½)

4920-2¾
829 (900-2¾)

CIRCLING

4920-1
825 (900-1)

4980-1¼
885 (900-1¼)

5420-3
1325 (1400-3)

5660-3
1565 (1600-3)

ELEV 4095

D

TDZE 4091

141° to RW14

4142

4173

5258 X 100

25

1000 X 150

32

REIL Rwy 25

MIRL Rwy 7-25

HIRL Rwy 14-32