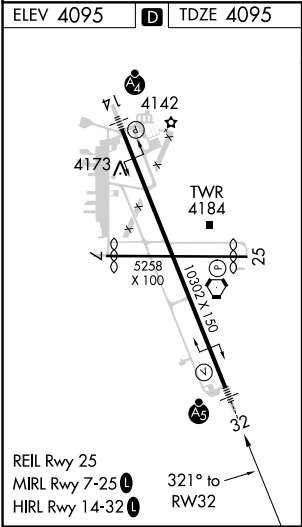
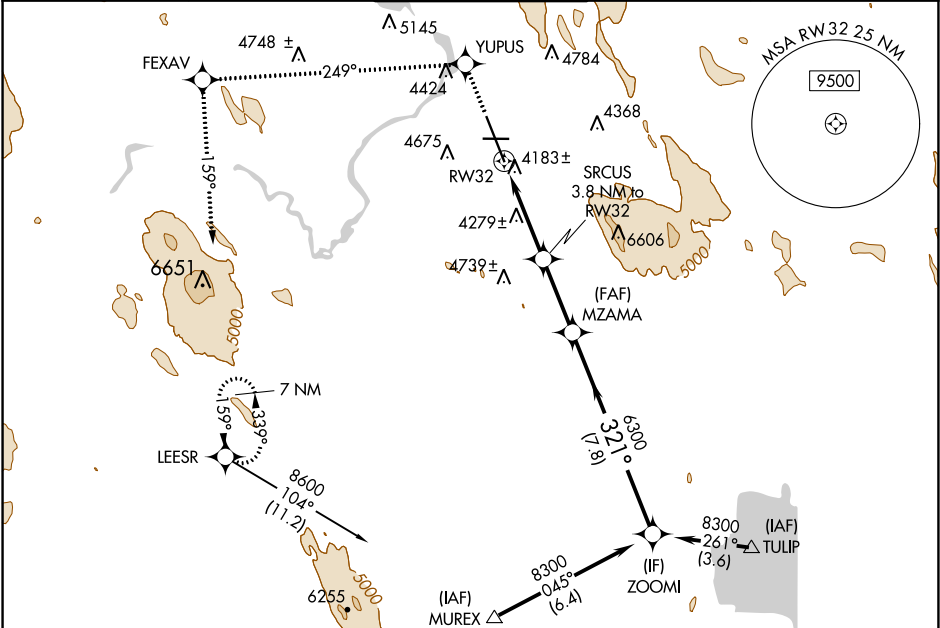


WAAS CH <b>70702</b> <b>W32A</b>	APP CRS <b>321°</b>	Rwy ldg <b>10302</b> TDZE <b>4095</b> Apt Elev <b>4095</b>
--	------------------------	--

RNAV (GPS) RWY 32  
CRATER LAKE-KLAMATH RGNL (LMT)

RNP APCH.		MALSR	MISSED APPROACH: Climb to 8600 direct YUPUS and via track 249° to FEXAV and via track 159° to LEESR and hold.	
For uncompensated Baro-VNAV systems, LNAV/VNAV NA below -23°C or above 41°C. For inop ALS, increase LPV all Cats visibility to RVR 5000. Circling NA for Cat D east of Rwy 14-32.				
ATIS <b>126.5 263.0</b>	KINGSLEY APP CON <b>123.675 270.8</b>	KINGSLEY TOWER* <b>133.975 (CTAF) 0 257.8</b>	GND CON <b>121.9 348.6</b>	UNICOM <b>122.95</b>



Procedure NA for arrivals at MUREX via V25 southbound, and at TULIP via V452 southeast bound.

\* LNAV only.

RW32

\* 1.8 NM to RW32

SRCUS 3.8 NM to RW32

MZAMA

321°

8300

6300

5360\*

1.8 NM

2 NM

2.8 NM

7.8 NM

GP 3.00° TCH 55

8600	YUPUS	↑	tr 249°	FEXAV	tr 159°	LEESR	Procedure Turn NA	
* LNAV only.		SRCUS 3.8 NM to RW32		MZAMA		8300		
RW32		* 1.8 NM to RW32		5360*		321°		
1.8 NM		2 NM		2.8 NM		7.8 NM		
CATEGORY	A		B		C		D	
LPV DA	4387/24		292 (300-1½)					
LNAV/VNAV DA	4674-1½		579 (600-1½)					
LNAV MDA	4720/24		625 (700-½)		4720/60 625 (700-1½)		4720-1½ 625 (700-1½)	
CIRCLING	4840-1 745 (800-1)		4980-1¼ 885 (900-1¼)		5420-3 1325 (1400-3)		5660-3 1565 (1600-3)	

NW-1, 31 DEC 2020 to 28 JAN 2021

NW-1, 31 DEC 2020 to 28 JAN 2021