

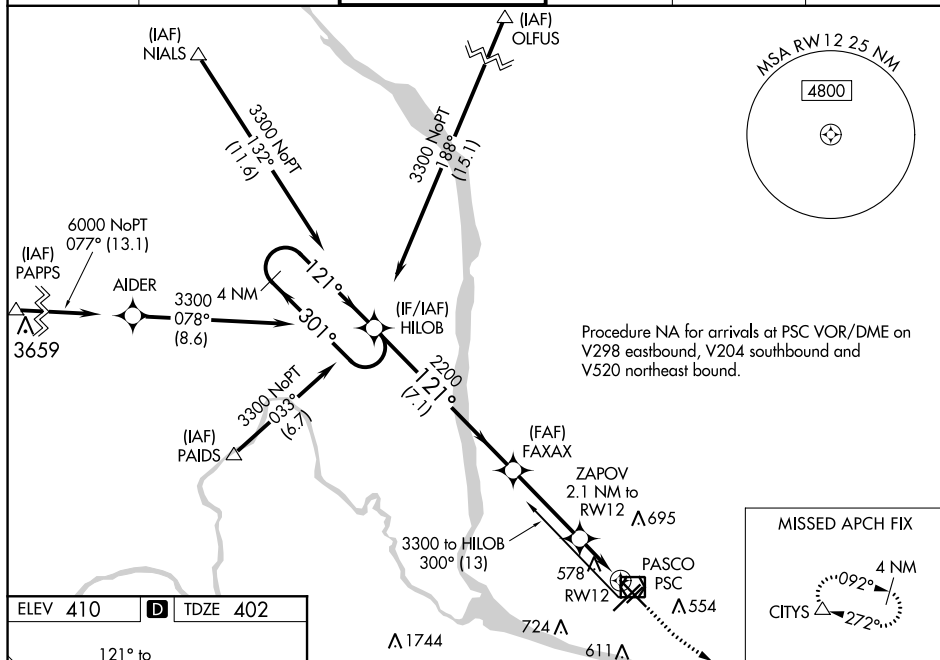
WAAS CH 58006 W12A	APP CRS 121°	Rwy Idg 7504 TDZE 402 Apt Elev 410
--	------------------------	---

RNAV (GPS) Y RWY 12
TRI-CITIES (PSC)

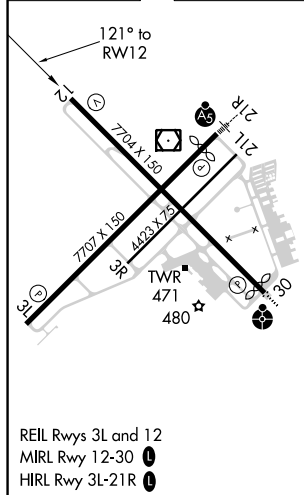
V Baro-VNAV NA when using Hermiston altimeter setting. For uncompensated Baro-VNAV systems, LNAV/VNAV NA below -14°C (7°F) or above 54°C (130°F). DME/DME RNP-0.3 NA. VDP NA with Hermiston altimeter setting. When local altimeter setting not received, use Hermiston altimeter setting: increase all DA 95 feet and all MDA 100 feet. Increase LPV all Cats visibilities 1/8 mile; LNAV/VNAV all Cats visibilities 3/8 mile; increase LNAV and Circling Cats C and D visibility 1/8 mile.

MISSED APPROACH:
Climb to 900 then
climbing left turn to
3200 direct CITYS
and hold.

ATIS 125.65	CHINOOK APP CON★ 128.75 377.2	TRI-CITIES TOWER★ 135.3 (CTAF) 0 323.3	GND CON 121.8	CLNC DEL 120.0	UNICOM 122.95
-----------------------	---	--	-------------------------	--------------------------	-------------------------



ELEV 410	D	TDZE 402
----------	----------	----------



REIL Rwy 3L and 12
MIRL Rwy 12-30 **L**
HIRL Rwy 3L-21R **L**

4 NM Holding Pattern

3300 ← 301° 121° →

GP 3.00° TCH 54

HILOB FAXAX ZAPOV 2.1 NM to RW12

2200 2200

*1100

*1.2 NM to RW12

RW12

7.1 NM 3.4 NM 0.9 NM 1.2 NM

900 3200 CITYS

△

*LNAV only

CATEGORY	A	B	C	D
LPV DA	602- ³ / ₄ 200 (200- ³ / ₄)			
LNAV/ VNAV DA	755-1 ¹ / ₈ 353 (400-1 ¹ / ₈)			
LNAV MDA	840-1 438 (500-1)		840-1 ³ / ₈ 438 (500-1 ³ / ₈)	
C CIRCLING	880-1 470 (500-1)	940-1 530 (600-1)	1040-1 ³ / ₄ 630 (700-1 ³ / ₄)	1100-2 ¹ / ₄ 690 (700-2 ¹ / ₄)