

VOR/DME PSC 109.8 Chan 35	APP CRS 217°	Rwy Idg 7110 TDZE 404 Apt Elev 410
---	------------------------	---

VOR RWY 21R
TRI-CITIES (PSC)

DME required.

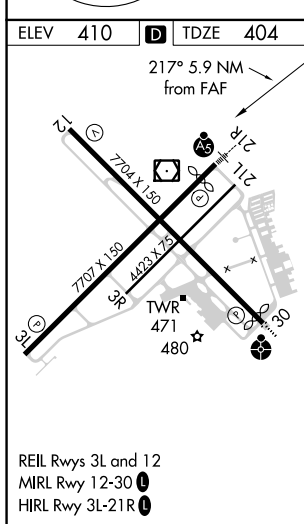
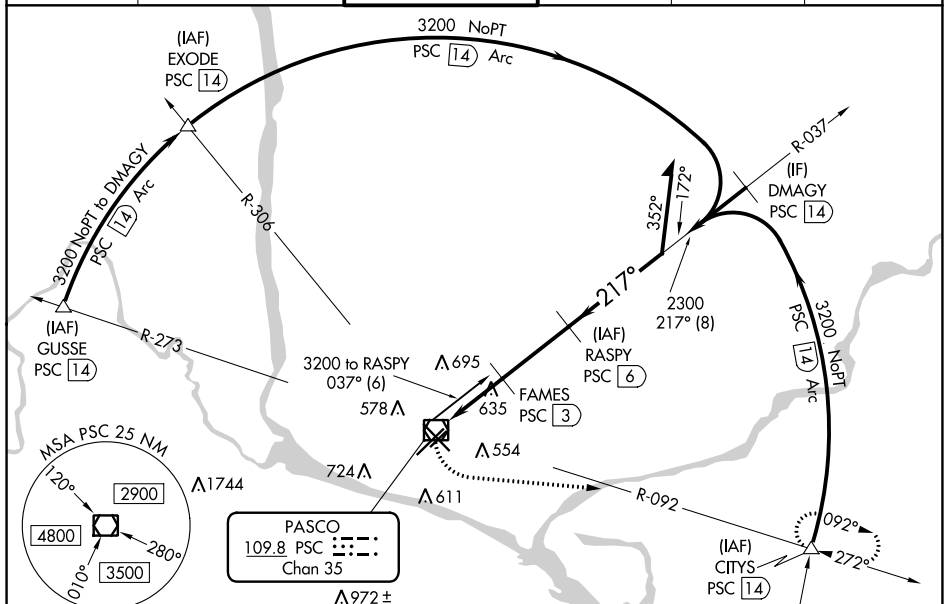
T VDP NA when using Hermiston altimeter setting. When local altimeter setting not received, use Hermiston altimeter setting and increase all MDA 100 feet and increase S-21R Cat C/D visibility $\frac{3}{8}$ SM and Circling Cat C/D visibility $\frac{1}{4}$ SM. For inop ALS when using Hermiston altimeter setting, increase Cat C/D visibility to $1\frac{3}{4}$ SM.

MALSR



MISSED APPROACH: Climbing left turn to 3200 on heading 080° and PSC VOR/DME R-092 PSC VOR/DME to CITYS INT/PSC 14 DME and hold.

ATIS 125.65	CHINOOK APP CON★ 128.75 377.2	TRI-CITIES TOWER★ 135.3 (CTAF) 0 323.3	GND CON 121.8	CLNC DEL 120.0	UNICOM 122.95
----------------	----------------------------------	---	------------------	-------------------	------------------



	3200 hdg 080°	PSC R-092	CITYS △	RASPY PSC 6	Remain within 10 NM
PSC VOR/DME	PSC 1.5	FAMES PSC 3	2.95° TCH 54	037° 217°	3200 2300
1.4 NM 1.5 NM 3 NM	1360	2300	037° 217°	3200 2300	3200 2300
CATEGORY	A	B	C	D	940/55 536 (600-1)
S-21R	940/24 536 (600-½)	940/55 536 (600-1)	1040-1¾ 630 (700-1¾)	1100-2¼ 690 (700-2¼)	940/55 536 (600-1)
C CIRCLING	940-1 530 (600-1)	940/55 536 (600-1)	1040-1¾ 630 (700-1¾)	1100-2¼ 690 (700-2¼)	940/55 536 (600-1)

NW-1, 31 DEC 2020 to 28 JAN 2021

NW-1, 31 DEC 2020 to 28 JAN 2021