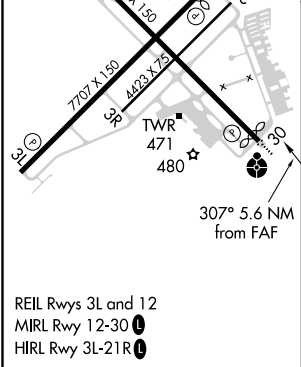
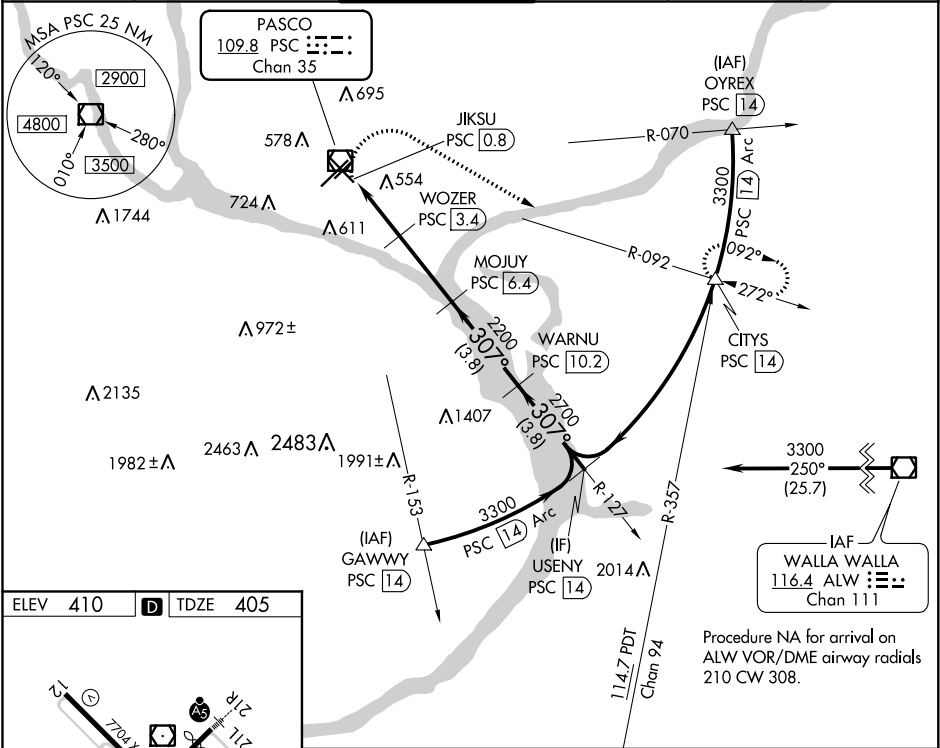


VOR/DME PSC	APP CRS	Rwy Idg	7504
109.8	307°	TDZE	405
Chan 35		Apt Elev	410

VOR RWY 30
TRI-CITIES(PSC)

DME required.	ODALS	MISSED APPROACH: Climbing right turn to 3200 on heading 105° and PSC R-092 to CITYS/PSC 14 DME and hold.
▼ Rwy 30 helicopter visibility reduction below ¾ SM not authorized. VDP NA when using Hermiston altimeter setting. When local altimeter setting not received, use Hermiston altimeter setting and increase all MDA 100 feet, increase S-30 visibility Cat C/D ¾ SM and Circling Cat C/D visibility ¼ SM. For inoperative ALS, increase S-30 Cat C/D visibility to 1¾ SM.		

ATIS 125.65	CHINOOK APP CON ★ 128.75 377.2	TRI-CITIES TOWER ★ 135.3 (CTAF) 0 323.3	GND CON 121.8	CLNC DEL 120.0	UNICOM 122.95
----------------	-----------------------------------	--	------------------	-------------------	------------------



3200	hdg 105°	CITYS	WOZER	MOJUJ	WARNU	USENY
PSC R-092		△	PSC 3.4	PSC 6.4	PSC 10.2	PSC 14
			JKSU PSC 0.8			
			1.1 NM	1.5	3 NM	3.8 NM
			1260	2200	3300	
			2.93° TCH 54			
CATEGORY	A	B	C	D		
S-30	820-¾	415 (500-¾)	820-1	415 (500-1)		
CIRCLING	880-1	940-1	1040-1 ¾	1100-2 ¼		
	470 (500-1)	530 (600-1)	630 (700-1¾)	690 (700-2¼)		