

MRIAS THREE DEPARTURE (RNAV)

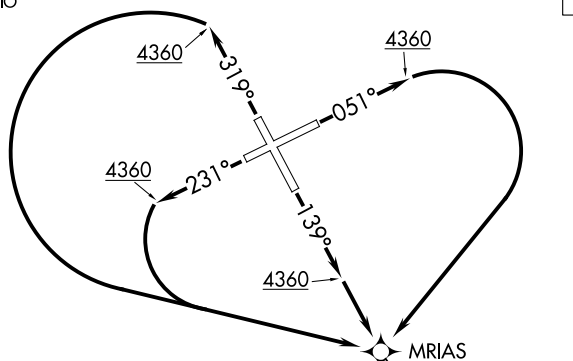
AL-484 (FAA)

CUT BANK INTL (CTB)

CUT BANK, MONTANA

SALT LAKE CITY CENTER
133.4 285.4
GREAT FALLS RADIO
122.2
CTAF
123.0

**TOP ALTITUDE:
ASSIGNED BY ATC**



NOTE: GPS required.

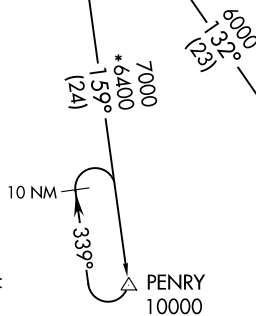
NOTE: Climb to 10000 in holding at PENRY if unable to meet crossing restriction.

NOTE: RNAV 1

TAKEOFF MINIMUMS

Rwy 5, 14, 23, 32: Standard with minimum climb of 500' per NM to 4360.

NOTE: Chart not to scale.



BRADZ

NW-1, 31 DEC 2020 to 28 JAN 2021



DEPARTURE ROUTE DESCRIPTION

TAKEOFF RUNWAY 5: Climb heading 051° to 4360, then right turn direct MRIAS.
Thence...

TAKEOFF RUNWAY 14: Climb heading 139° to 4360, then direct MRIAS. Thence. . .

TAKEOFF RUNWAY 23: Climb heading 231° to 4360, then left turn direct MRIAS.
Thence. . .

TAKEOFF RUNWAY 32: Climb heading 319° to 4360, then left turn direct MRIAS.
Thence. . .

BRADZ TRANSITION (MRIAS3.BRADZ)

PENRY TRANSITION (MRIAS3. PENRY)

MRIAS THREE DEPARTURE (RNAV)

(MRIAS3.MRIAS) 21JUL16

CUT BANK, MONTANA
CUT BANK INTL (CTB)