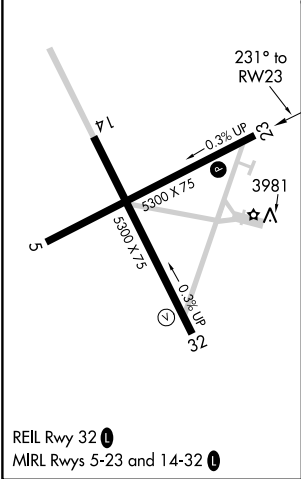
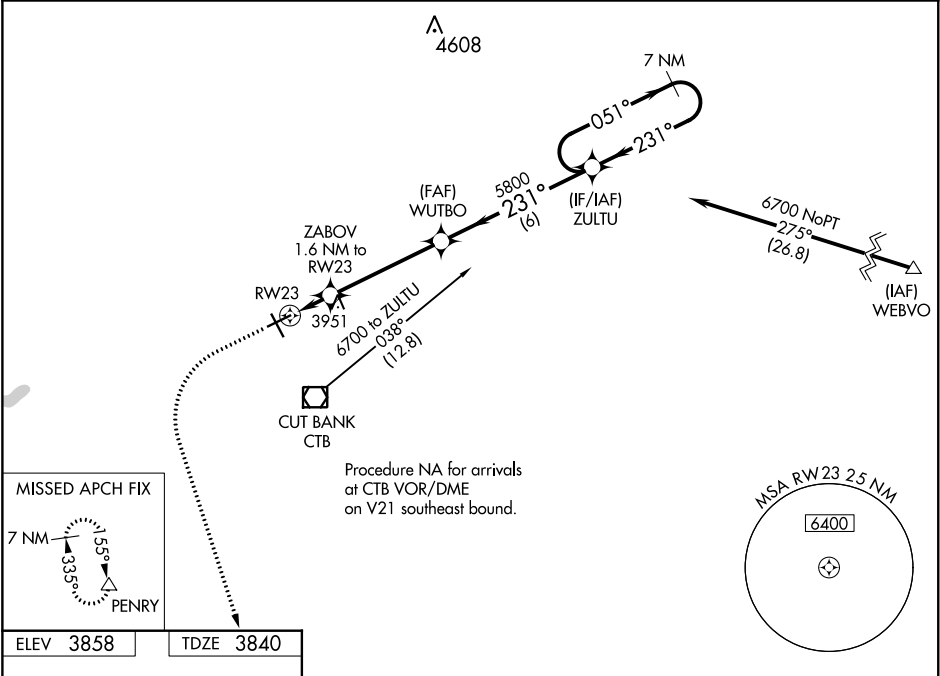


WAAS CH <b>53337</b> <b>W23A</b>	APP CRS <b>231°</b>	Rwy Idg TDZE <b>3840</b> Apt Elev <b>3858</b>
--	------------------------	---

RNAV (GPS) RWY 23  
CUT BANK INTL (CTB)

<p>⚠ For uncompensated Baro-VNAV systems, LNAV/VNAV NA below -25°C (-13°F) or above 51°C (124°F). DME/DME RNP-0.3 NA.</p>	<p>MISSED APPROACH: Climb to 4400 then climbing left turn to 9000 direct PENRY and hold.</p>
---	--

ASOS <b>119.025</b>	SALT LAKE CITY CENTER <b>133.4 285.4</b>	UNICOM <b>123.0 (CTAF) 0</b>
------------------------	---	---------------------------------



4400 ↑	9000 ↙	PENRY △	VGSI and RNAV glidepath not coincident (VGSI Angle 3.00/TCH 39).			
*LNAV only.		ZABOV 1.6 NM to RW23	ZULTU 7 NM Holding pattern			
*1.1 NM to RW23		WUTBO 5800	231°		051° → ← 231° 6700	
RW23		4400*	5800		GP 3.00° TCH 52	
1.1 NM		0.5	4.4 NM		6 NM	
CATEGORY	A		B	C	D	
LPV DA	4040-1		200 (200-1)			
LNAV/VNAV DA	4090-1		250 (300-1)			
LNAV MDA	4220-1		380 (400-1)			
CIRCLING	4280-1 422 (500-1)	4320-1 462 (500-1)	4400-1½ 542 (600-1½)	4620-2½ 762 (800-2½)		

NW-1, 31 DEC 2020 to 28 JAN 2021

NW-1, 31 DEC 2020 to 28 JAN 2021