

LOC/DME I-JAC <b>109.1</b> Chan <b>28</b>	APP CRS <b>187°</b>	Rwy Idg TDZE Apt Elev	<b>6300</b> <b>6451</b> <b>6451</b>
---	------------------------	-----------------------------	---

ILS Z or LOC Z RWY 19  
JACKSON HOLE (JAC)

RNAV 1-GPS Required. DME required for LOC only.

- ▼

NA

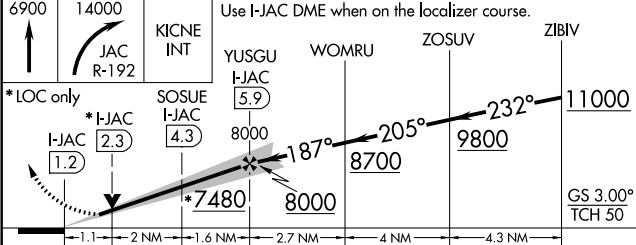
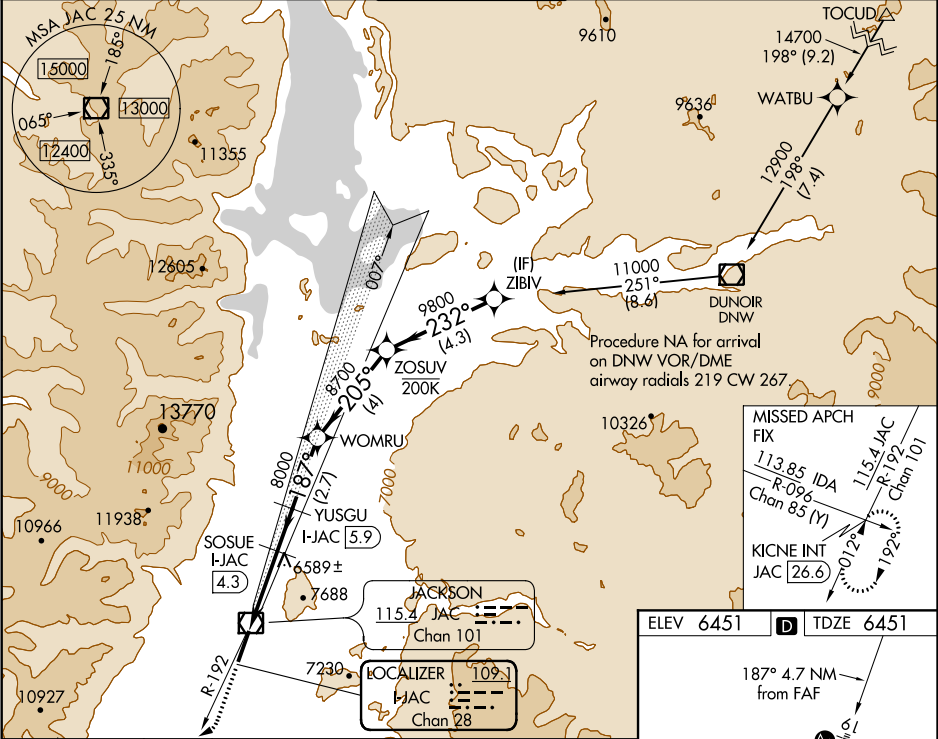
-21°C
- Circling NA east of Rwy 1-19.  
For inop ALS, increase S-LOC 19# Cat A/B RVR to 5500  
and Cat C/D RVR to 6000.  
Inop table does not apply to S-ILS 19#.

MALS

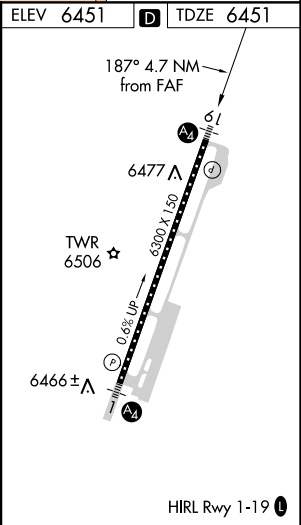


MISSED APPROACH: Climb to 6900 then climbing right turn to 14000 on JAC VOR/DME R-192 to KICNE INT/JAC 26.6 DME and hold, continue climb-in-hold to 14000. #Missed approach requires minimum climb of 235 feet per NM to 10600.

ATIS★ <b>120.625</b>	SALT LAKE CENTER <b>133.25 285.6</b>	JACKSON TOWER★ <b>118.075 (CTAF)</b> 0	GND CON <b>124.55</b>	UNICOM <b>122.95</b>
-------------------------	---	---	--------------------------	-------------------------



CATEGORY	A	B	C	D
S-ILS 19 #	6651/40 200 (200-¾)			
S-LOC 19 #	6840/40 389 (400-¾)	6840/45 389 (400-¾)		
CIRCLING	6840-1 389 (400-1)	6920-1 469 (500-1)	6920-1½ 469 (500-1½)	7080-2 629 (700-2)



NW-1, 31 DEC 2020 to 28 JAN 2021

NW-1, 31 DEC 2020 to 28 JAN 2021