

APP CRS  
**187°**

Rwy Idg  
**6300**

TDZE  
**6451**

Apt Elev  
**6451**

# RNAV (RNP) Y RWY 19

JACKSON HOLE (JAC)

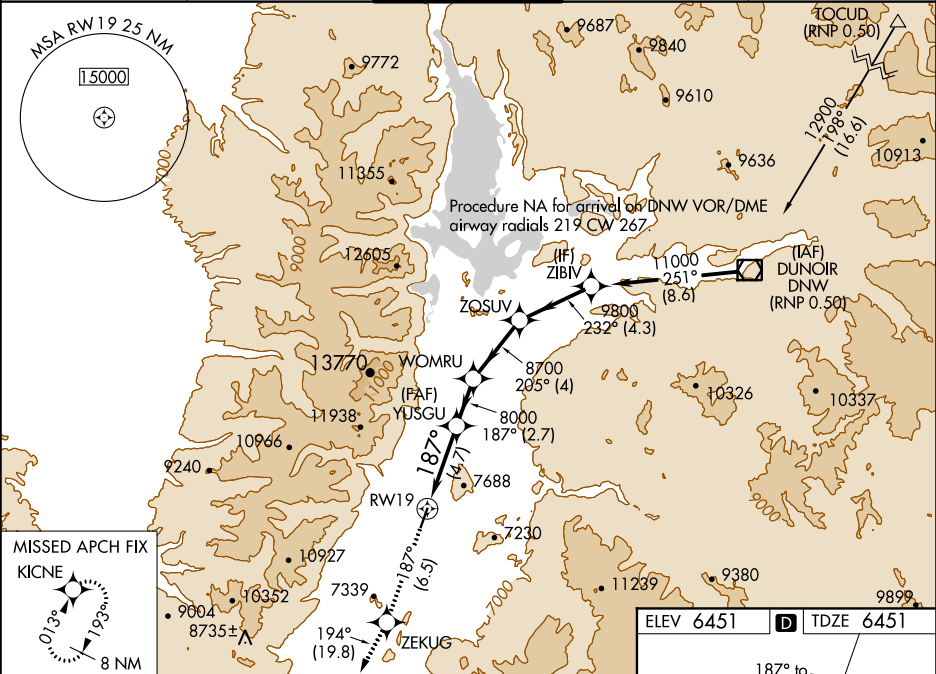
RNP AR APCH:  
▼  
-21°C

For uncompensated Baro-VNAV systems, procedure NA below -27°C or above 54°C. For inop ALS, increase RNP 0.30 all Cats visibility to 1 3/8 SM. For inop ALS, increase RNP 0.11\* all Cats visibility to RVR 4500.

MALS  
42

MISSED APPROACH: Climb to 14000 on track 187° to ZEKUG and on track 194° to KICNE and hold, continue climb-in-hold to 14000.  
\* Missed approach requires minimum climb of 250 feet per NM to 8200.  
# Missed approach requires minimum climb of 330 feet per NM to 8200.

|                         |   |   |                          |                         |
|-------------------------|---|---|--------------------------|-------------------------|
| ATIS★<br><b>120.625</b> | SALT LAKE CENTER<br><b>133.25 285.6</b> | JACKSON TOWER★<br><b>118.075 (CTAF) 0</b> | GND CON<br><b>124.55</b> | UNICOM<br><b>122.95</b> |
|-------------------------|---|---|--------------------------|-------------------------|



| CATEGORY               | A | B       | C           | D |
|------------------------|---|---------|-------------|---|
| RNP 0.11 DA *          |   | 6750/40 | 299 (300-¾) |   |
| RNP 0.30 DA #          |   | 6826/40 | 375 (400-¾) |   |
| RNP 0.30 DA            |   | 6911/55 | 460 (500-1) |   |
| AUTHORIZATION REQUIRED |   |         |             |   |