

WAAS CH <b>90337</b> <b>W34A</b>	APP CRS <b>343°</b>	Rwy Idg TDZE <b>8203</b> <b>7280</b> Apt Elev <b>7289</b>
--	------------------------	--

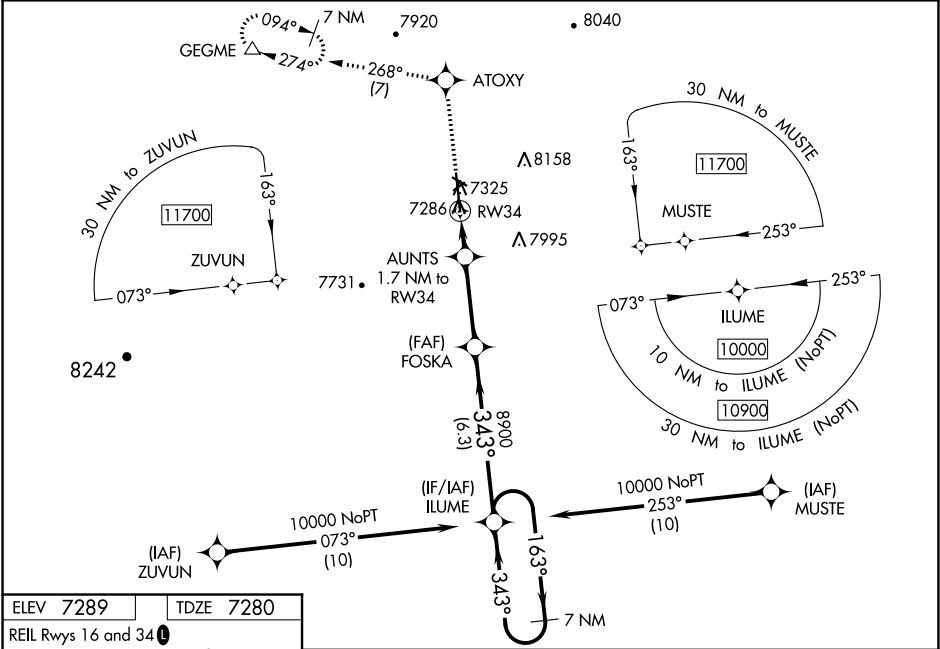
RNAV (GPS) RWY 34

KEMMERER MUNI (EMM)

Baro-VNAV and VDP NA when using Evanston altimeter setting.  
For uncompensated Baro-VNAV systems, LNAV/VNAV NA below -27°C (-16°F) or above 54°C (130°F). DME/DME RNP-0.3 NA.  
Night landing: Rwy 4, 10, 22, 28 NA. When local altimeter setting not received, use Evanston altimeter setting: increase all DA 111 feet and visibilities 1/8 mile; increase all MDA 120 feet.

MISSED APPROACH: Climb to 12000 direct ATOXY and on track 268° direct GEGME and hold, continue climb-in-hold to 12000.

AWOS-3PT <b>119.675</b>	SALT LAKE CITY CENTER <b>124.35 353.5</b>	UNICOM <b>122.8 (CTAF) 0 *</b>
----------------------------	--	-----------------------------------



ELEV **7289**TDZE **7280**

REIL Rwy 16 and 34  
MIRL Rwy 16-34 and 4-22