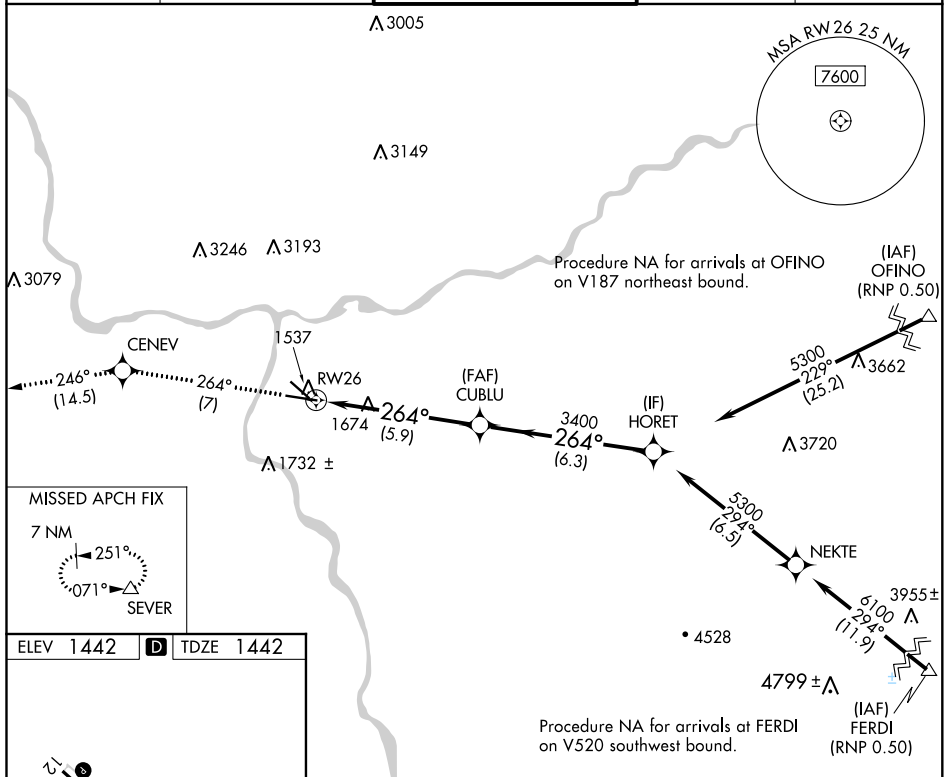


RNAV (RNP) Z RWY 26
LEWISTON-NEZ PERCE COUNTY (LWS)

MISSED APPROACH: Climb to 7000 on track 264° to CENEV and on track 246° to SEVER and hold, continue climb-in-hold to 7000.

UNICOM
122.95

7000 ↑ tr 264°	CENEV ✱	tr 246°	SEVER △	VGSJ and RNAV glidepath not coincident (VGSJ Angle 3.00°/TCH 51).	HORET
CATEGORY	A	B	C	D	
RNP 0.20 DA	1806- ³ / ₄ 364 (400- ³ / ₄)				
RNP 0.30 DA	2003-1½ 561 (600-1½)				

AUTHORIZATION REQUIRED

NW-1, 31 DEC 2020 to 28 JAN 2021

NW-1, 31 DEC 2020 to 28 JAN 2021