

LEWISTON, IDAHO

AL-515 (FAA)

20310

WAAS CH <b>78012</b> <b>W26A</b>	APP CRS <b>264°</b>	Rwy Idg <b>6511</b> TDZE <b>1442</b> Apt Elev <b>1442</b>
--	------------------------	---

## RNAV (GPS) Y RWY 26

LEWISTON-NEZ PERCE COUNTY (LWS)

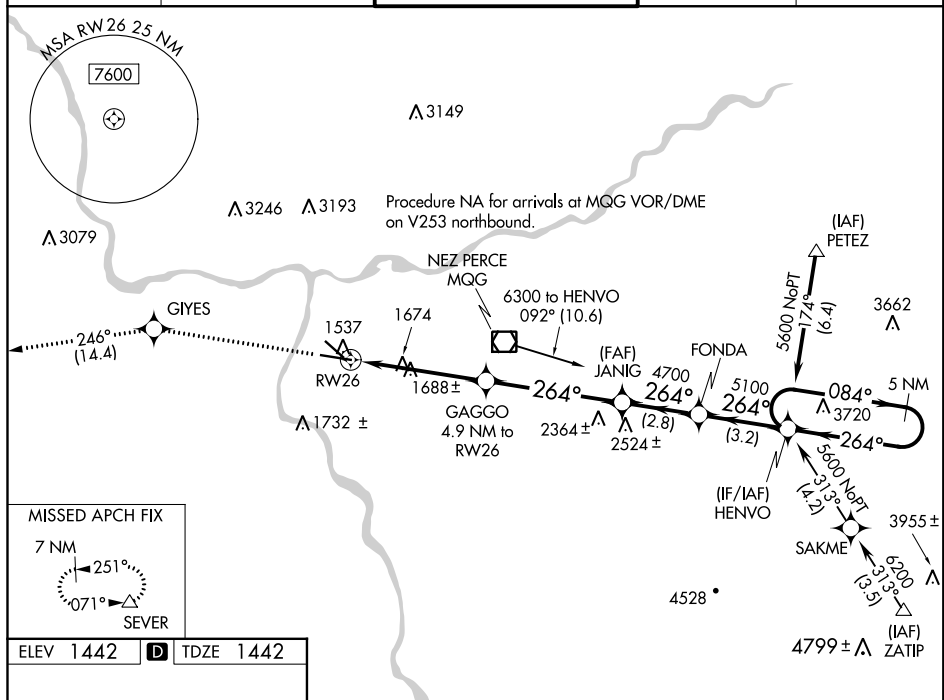


For uncompensated Baro-VNAV systems, LNAV/VNAV NA below -17°C (2°F) or above 47°C (116°F). DME/DME RNP-0.3 NA.

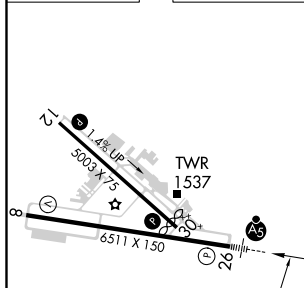


**MISSED APPROACH:** Climb to 7000 direct GIYES and on track 246° to SEVER and hold, continue climb-in-hold to 7000.

ASOS 135.575	SEATTLE CENTER 123.95 290.55	LEWISTON TOWER ★ 119.4 (CTAF) 0 318.8	GND CON 121.9	UNICOM 122.95
-----------------	---------------------------------	--	------------------	------------------



ELEV 1442	<b>D</b>	TDZE 1442
-----------	----------	-----------



REIL Rwy 8 **L**  
REIL Rwy 12  
HIRL Rwy 8-26  
MIRL Rwy 12-30

LEWISTON, IDAHO  
Orig-B 17AUG17

**7000** **↑** **GIYES** **tr** **246°** **SEVER** **△** **VGS1 and RNAV glidepath not coincident (VGS1 Angle 3.00°/TCH 51).** **5 NM** **HENVO** **Holding Pattern**

**\*RNAV only**

**GAGGO** **4.9 NM to RW26** **JANIG** **4700** **FONDA** **HENVO** **5600** **084°** **264°** **264°** **GP 3.00°** **TCH 51**

**\*1.4 NM to RW26** **\*3060** **4700**

**1.4** **3.5 NM** **4.9 NM** **2.8 NM** **3.2 NM**

CATEGORY	A	B	C	D
LPV DA	1642-½ 200 (200-½)			
RNAV/ RNAV DA	1962-1¼ 520 (600-1¼)			
RNAV MDA	1940-½ 498 (500-½)		1940-1 498 (500-1)	
CIRCLING	2000-1 558 (600-1)		2000-1½ 558 (600-1½)	2160-2¼ 718 (800-2¼)

LEWISTON-NEZ PERCE COUNTY (LWS)

RNAV (GPS) Y RWY 26

46°22'N-117°01'W

NW-1, 31 DEC 2020 to 28 JAN 2021