

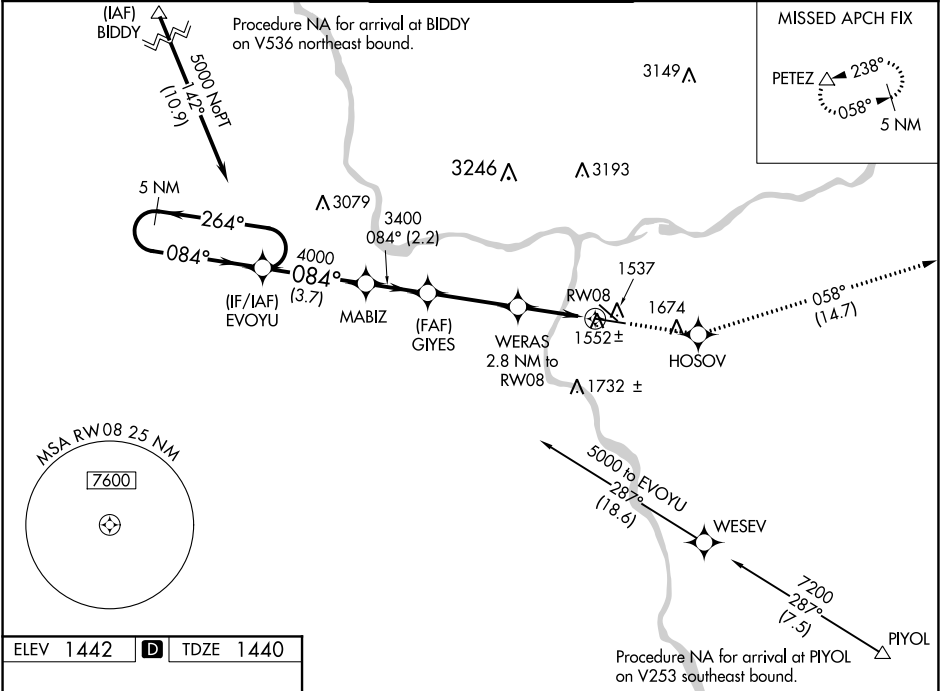
WAAS CH 97600 W08A	APP CRS 084°	Rwy Idg TDZE 1440 Apt Elev 1442
--	------------------------	---

RNAV (GPS) Y RWY 8
LEWISTON-NEZ PERCE COUNTY (LWS)

⚠ For uncompensated Baro-VNAV systems, LNAV/VNAV NA below -14°C (7°F) or above 34°C (93°F). DME/DME RNP-0.3 NA.

MISSED APPROACH: Climb to 5700 direct HOSOV and on track 058° to PETEZ and hold, continue climb-in-hold to 5700.

ASOS 135.575	SEATTLE CENTER 123.95 290.55	LEWISTON TOWER ★ 119.4 (CTAF) 0 318.8	GND CON 121.9	UNICOM 122.95
------------------------	--	---	-------------------------	-------------------------



ELEV 1442	D	TDZE 1440
------------------	----------	------------------

	5 NM Holding Pattern		5700	HOSOV	tr 058°	PETEZ
			↑	✧	✧	△
	EVOYU		MABIZ	GIYES	WERAS 2.8 NM to RW08	*LNAV only
	5000 ← 264° → 084° →		4000	3400	*1.1 NM to RW08	
	GP 3.00° TCH 45		3400	*2360	RW08	
	← 3.7 NM → 2.2 NM → 3.3 NM → 1.7 NM → 1.1 NM →					
CATEGORY	A	B	C	D		
LPV DA	1690-3/4		250 (300-3/4)			
LNAV/VNAV DA	1736-1		296 (300-1)			
LNAV MDA	1820-1	380 (400-1)	1820-1 1/8	380 (400-1 1/8)		
CIRCLING	2000-1	558 (600-1)	2000-1 1/2 558 (600-1 1/2)	2160-2 1/4 718 (800-2 1/4)		

NW-1, 31 DEC 2020 to 28 JAN 2021

NW-1, 31 DEC 2020 to 28 JAN 2021