

LOC/DME I-DLS <u>109.35</u> Chan 30 (Y)	APP CRS 238°	Rwy Idg 4451 TDZE 243 Apt Elev 247
---	------------------------	---

LDA/DME RWY 25

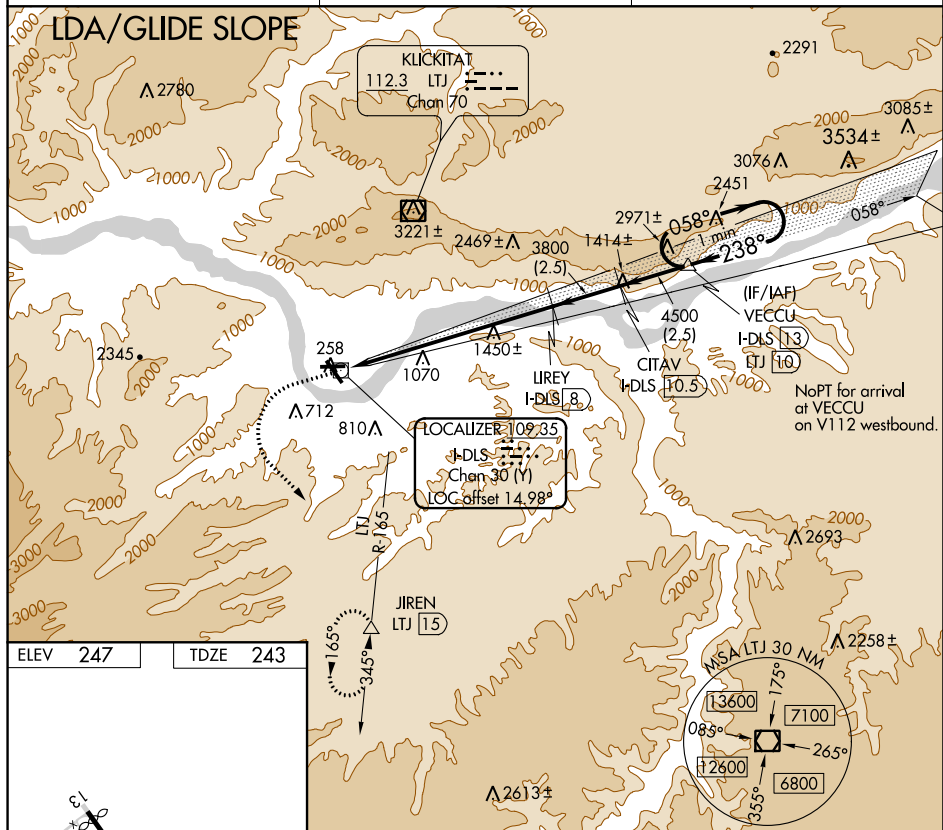
COLUMBIA GORGE RGNL/THE DALLES MUNI(DLS)



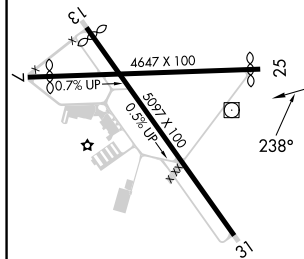
When local altimeter setting not received, procedure NA.
Glide slope provided by standard glide slope equipment.

MISSED APPROACH: Climb to 1600 then climbing left turn to 7000 on heading 120° and LTJ VOR/DME R-165 to JIREN/LTJ 15 DME and hold, continue climb-in-hold to 7000.

ASOS 135.175	SEATTLE CENTER 119.65 257.6	UNICOM 123.0 (CTAF) 0
------------------------	---------------------------------------	---------------------------------



ELEV	247		TDZE	243
------	-----	--	------	-----



REIL Rwy 31 **L**★
MIRL Rwy 7-25 and 13-31 **L**

1600 ↑	7000 hdg 120°	LTJ R-165	JIREN △	Use I-DLS DME when on the localizer course.	
				VECCU I-DLS 13 One Minute Holding Pattern	
CATEGORY	A	B	C	D	
S-LDA/GS 25	1368-3	1125 (1200-3)	NA		

LDA/DME RWY 25