




NDB GEY <b><u>275</u></b>	APP CRS <b>324°</b>	Rwy Idg TDZE Apt Elev	<b>7003</b> <b>3916</b> <b>3942</b>
------------------------------	------------------------	-----------------------------	---

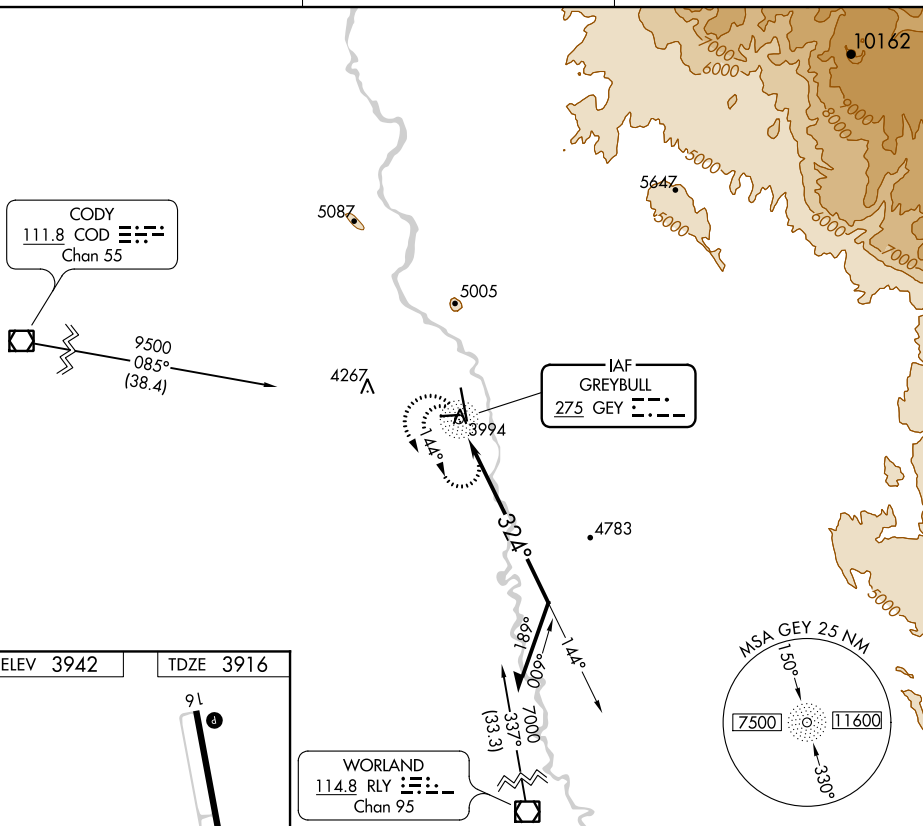
NDB RWY 34  
SOUTH BIG HORN COUNTY (GEY)

	When local altimeter setting not received,
 NA	use Cowley/Lovell/Byron altimeter setting
 -33°C	and increase all MDAs 100 feet.

**MISSED APPROACH:** Climbing left turn to 6600 in GEY NDB holding pattern.

ASOS  
135,325

SALT LAKE CENTER  
127.75 351.9

CTAF  
122.9 L

ELEV 3942		TDZE 3916
-----------	--	-----------

