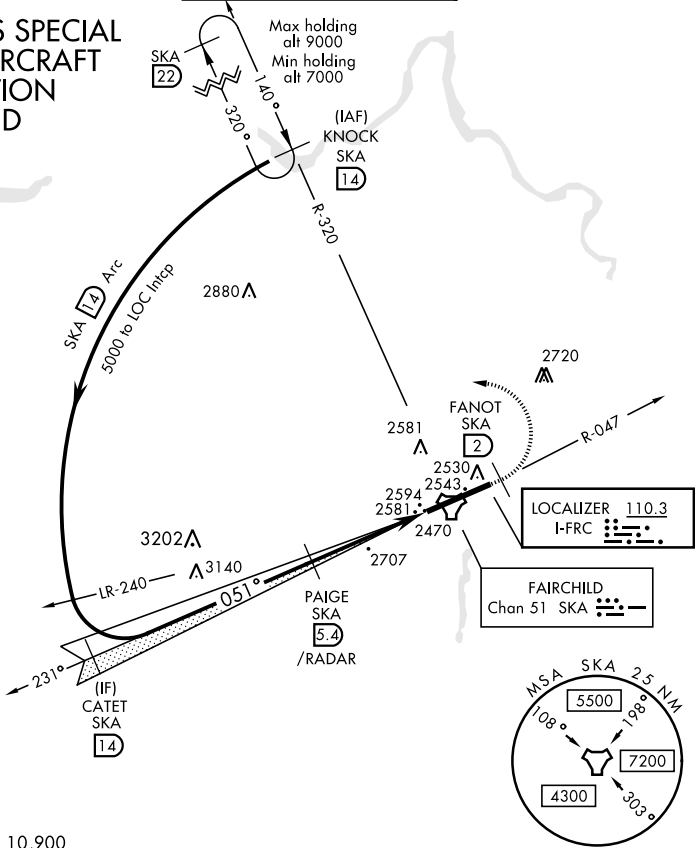


ILS RWY 5 (CAT II)

LOC I-FRC <b>110.3</b>		APCH CRS <b>051°</b>		Rwy Idg <b>13,899</b> TDZE <b>2462</b> Arpt Elev <b>2462</b>		AL-553 [USAF]		FAIRCHILD AFB (KSKA)	
<div><div>▼</div><div></div></div>						ALSF-2 <div><div>ⓘ</div><div>ⓘ</div></div>		MISSED APPROACH: Climb to 7000 via SKA TACAN R-047. At SKA 2 DME turn left hdg 280° to intcp SKA R-320 to KNOCK and hold, continue climb in hold to 7000.	
						ATIS <b>257.625</b>		SPOKANE APP CON 029°- 207° <b>133.35 263.0</b> 208°- 028° <b>123.75 282.25</b>	

CATEGORY II ILS SPECIAL  
AIRCREW & AIRCRAFT  
CERTIFICATION  
REQUIRED



EMERG SAFE ALT 100 NM 10,900

KNOCK R-320 6000 14 Intcp Lczt 5000 051° Arc 14 GS 3.00° TCH 58		CATET 14 PAIGE 5.4 /RADAR 4000		7000 SKA R-047		FANOT SKA 2		hdg 280°		ELEV 2462		TDZE 2462	
TACAN		4.6 NM		1194		2569		2583		2643		2685	
CATEGORY		A		B		C		D		E		HRL Rwy 5-23 TDZL/CL Rwy 5	
S-ILS 5		RA 107/12		108		DA 2570							

ILS RWY 5 (CAT II)

NW-1, 31 DEC 2020 to 28 JAN 2021

NW-1, 31 DEC 2020 to 28 JAN 2021