

SPOKANE, WASHINGTON

RNAV (GPS) RWY 23

APCH CRS	Rwy Idg	13,899
231°	TDZE	2423
	Arpt Elev	2462

AL-553 (USAF)

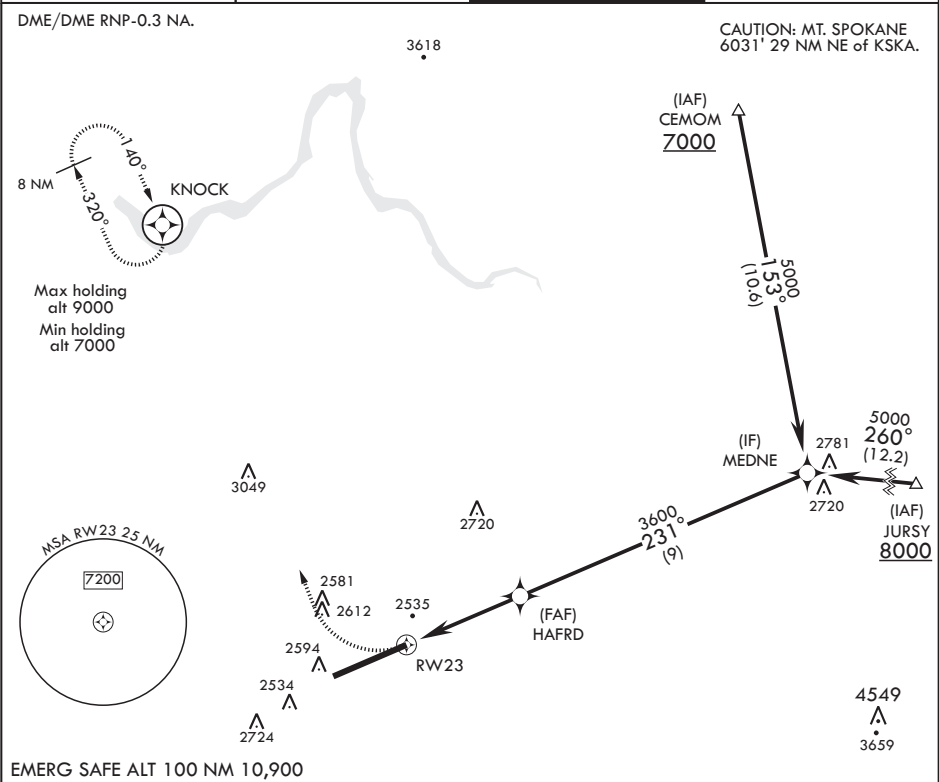
FAIRCHILD AFB (KSKA)

▼ \* When ALS inop, increase CAT AB RVR to 55 and vis to 1 mile, CAT CDE vis to 1 1/4 miles.  
\*\* Circling S of Rwy 5-23 NA.



MISSED APPROACH: Climb to 7000 via right turn direct to KNOCK and hold, continue climb in hold to 7000.

ATIS 257.625	SPOKANE APP CON 123.75 282.25 208°-028° 133.35 263.0 029°-207°	TOWER 120.35 233.7	GND CON 123.6 275.8
-----------------	--	-----------------------	------------------------



7000 KNOCK		MEDNE		ELEV 2462	TDZE 2423
CATEGORY	A	B	C	D	E
LNAV MDA*	2820/24 397 (400-1/2)	2820/35 397 (400-5/8)	3040-1 578 (600-1 1/2)	3040-2 578 (600-2)	3500-3 1038 (1100-3)
CIRCLING**	2900-1 438 (500-1)	2920-1 458 (500-1)	3040-1 578 (600-1 1/2)	3040-2 578 (600-2)	3500-3 1038 (1100-3)

SPOKANE, WASHINGTON

47°37'N - 117°39'W

FAIRCHILD AFB (KSKA)

Amdt 1 24MAY18

RNAV (GPS) RWY 23

NW-1, 31 DEC 2020 to 28 JAN 2021

NW-1, 31 DEC 2020 to 28 JAN 2021