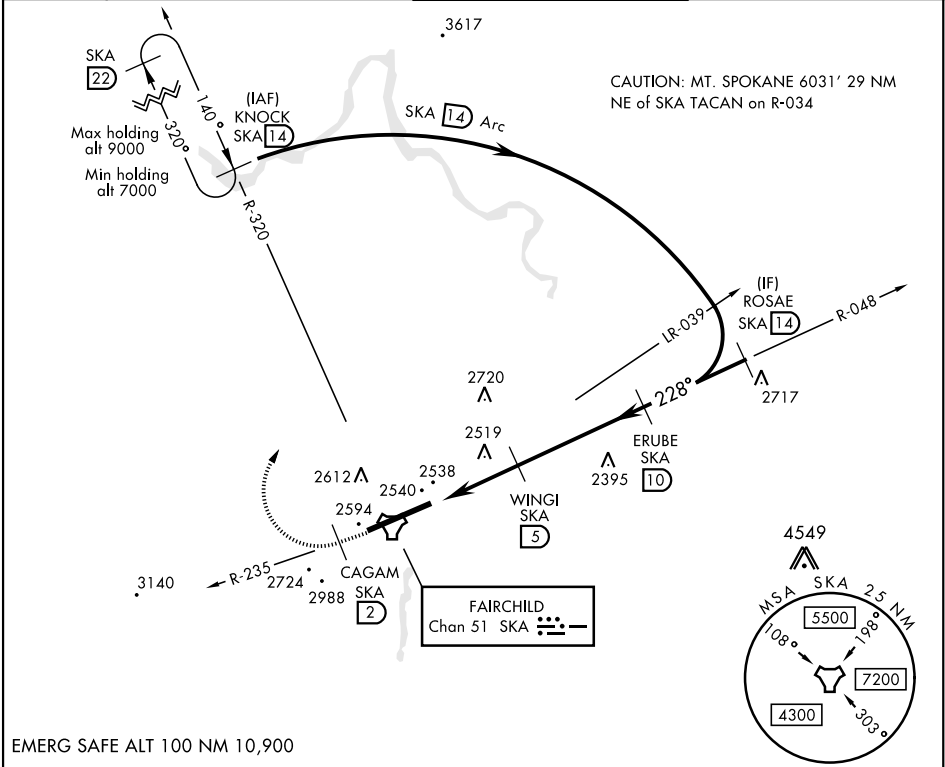


SPOKANE, WASHINGTON

TACAN RWY 23

TACAN SKA Chan 51	APCH CRS 228°	Rwy Idg 13,899 TDZE 2423 Arpt Elev 2462	AL-553 [USAF]	FAIRCHILD AFB (KSKA)
* When ALS inop, increase CAT AB RVR to 55 and vis to 1 mile, CAT CDE RVR to 60, vis to 1½ miles. ** Circling S of Rwy 5-23 NA.			ALSF-1 A1	MISSED APPROACH: Climb to 7000 via SKA TACAN R-235. At SKA 2 DME, turn right heading 340° to intcp SKA R-320 to KNOCK and hold, continue climb in hold to 7000.
ATIS 257.625	SPOKANE APP CON 029°- 207° 133.35 263.0 208°- 028° 123.75 282.25		FAIRCHILD TOWER 120.35 233.7	GND CON 123.6 275.8



EMERG SAFE ALT 100 NM 10,900

7000 SKA R-235	CAGAM SKA 2	hdg 340°				ELEV 2462	TDZE 2423
<p>Diagram details: TACAN, ITODE 2.6, 2, 3600, WINGI 5, 4500, ERUBE 10, 5000, ROSAE R-048 14, 6000, KNOCK R-320 14, 3.04° TCH 56, Arc 14, 2569, 2583, 2643, 13,899, 150, TWR 2546, 228° to TACAN, 0.3% UP, A1, P, 23.</p>							
CATEGORY	A		B	C	D	E	
S-23 *	2820/24 397 (400-½)		2820/35 397 (400-¾)				
CIRCLING **	2900-1 438 (500-1)	2920-1 458 (500-1)	3040-1½ 578 (600-1½)	3040-2 578 (600-2)	3500-3 1038(1100-3)		
HIRL Rwy 5-23 TDZL/CL Rwy 5							