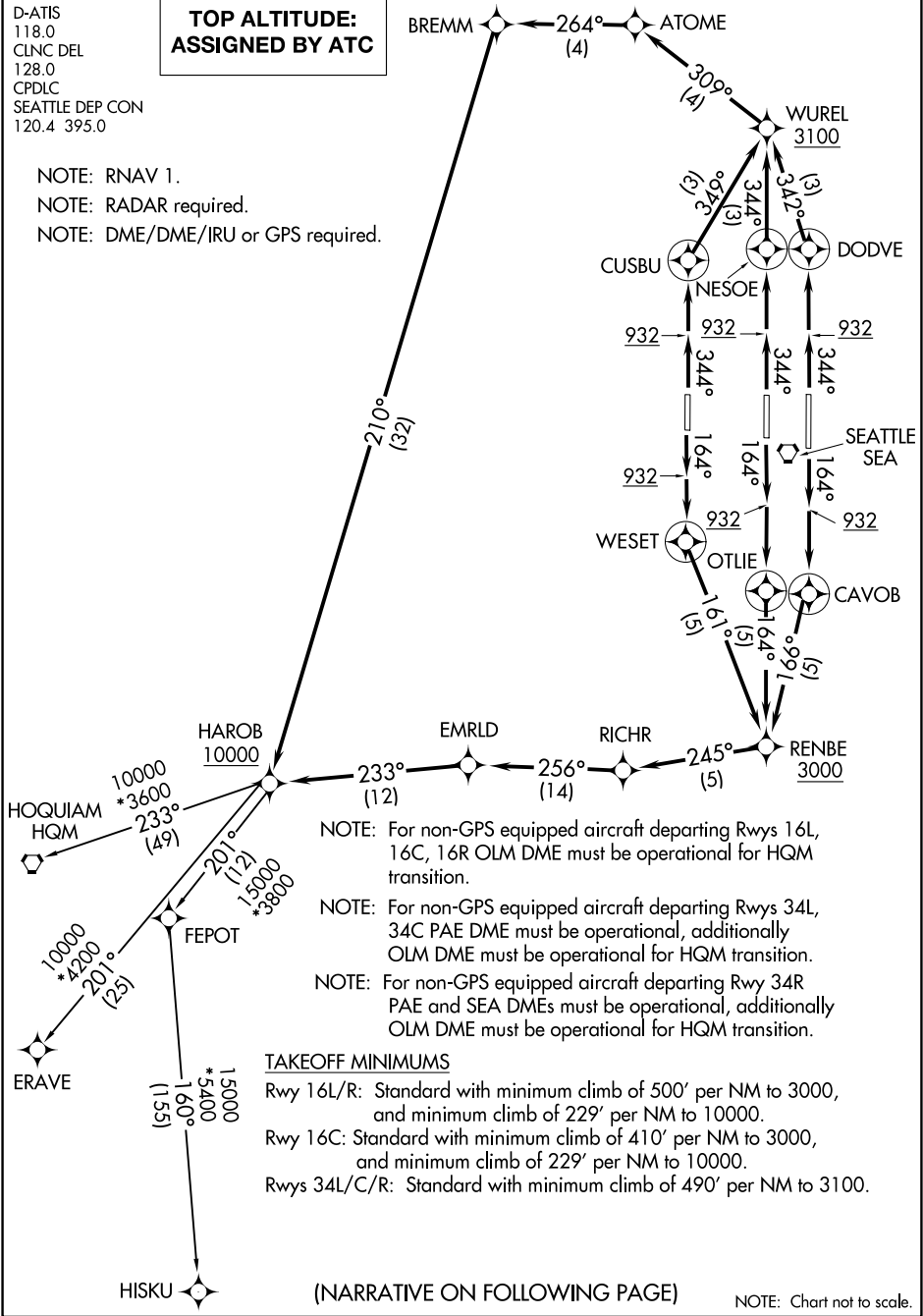


D-ATIS
118.0
CLNC DEL
128.0
CPDLC
SEATTLE DEP CON
120.4 395.0

TOP ALTITUDE:
ASSIGNED BY ATC

- NOTE: RNAV 1.
NOTE: RADAR required.
NOTE: DME/DME/IRU or GPS required.



- NOTE: For non-GPS equipped aircraft departing Rwy 16L, 16C, 16R OLM DME must be operational for HQM transition.
- NOTE: For non-GPS equipped aircraft departing Rwy 34L, 34C PAE DME must be operational, additionally OLM DME must be operational for HQM transition.
- NOTE: For non-GPS equipped aircraft departing Rwy 34R PAE and SEA DMEs must be operational, additionally OLM DME must be operational for HQM transition.
- TAKEOFF MINIMUMS
- Rwy 16L/R: Standard with minimum climb of 500' per NM to 3000, and minimum climb of 229' per NM to 10000.
- Rwy 16C: Standard with minimum climb of 410' per NM to 3000, and minimum climb of 229' per NM to 10000.
- Rwys 34L/C/R: Standard with minimum climb of 490' per NM to 3100.