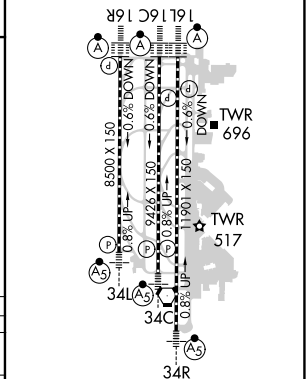


ILS RWY 16C (SA CAT I)
SEATTLE-TACOMA INTL (SEA)

MISSED APPROACH: Climb on heading 160° and SEA VORTAC R-161 to cross TEBNE/SEA 2.4 DME/RADAR at or below 2000, then climb to 5000 on SEA VORTAC R-161 to MILIT/SEA 11 DME/RADAR and hold, continue climb-in-hold to 5000.




D-ATIS
118.0



SEATTLE-TACOMA INTL (SEA)

ILS RWY 16C (SA CAT I)

NW-1, 31 DEC 2020 to 28 JAN 2021