

LOC/DME I-TUC 111.7 Chan 54	APP CRS 344°	Rwy Idg TDZE Apt Elev	9426 387 432
-------------------------------------------------	------------------------	-----------------------------	-----------------------------------------

ILS RWY 34C (SA CAT I & II)
SEATTLE-TACOMA INTL (SEA)

DME or RADAR required. From SONDR: RNAV 1-GPS required.

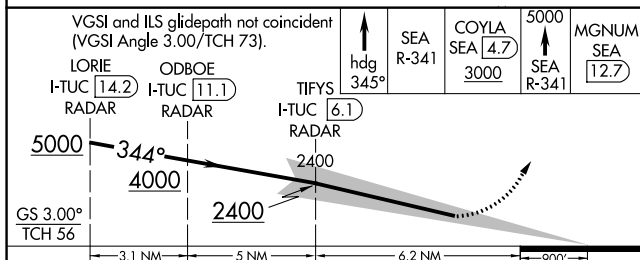
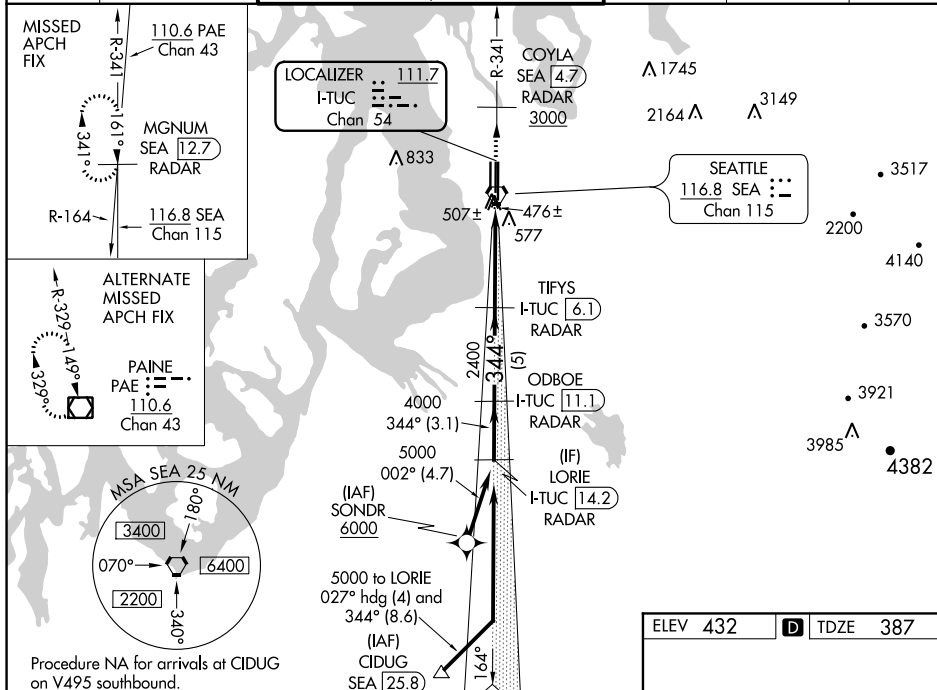
T Simultaneous approach authorized with Rwy 34L. SA CAT I: Requires specific OPSPEC, MSPEC, or LOA approval and use of HUD to DH. SA CAT II: Reduced lighting: Requires specific OPSPEC, MSPEC, or LOA approval and use of autoland or HUD to touchdown.

MALSR



MISSED APPROACH: Climb on heading 345° and outbound on SEA VORTAC R-341 to cross COYLA/SEA 4.7 DME/RADAR at or above 3000 then climb to 5000 on SEA VORTAC R-341 to MGNUM/SEA 12.7 DME/RADAR and hold, continue climb-in-hold to 5000.

D-ATIS	SEATTLE APP CON	SEATTLE TOWER		GND CON	CLNC DEL	CPDLC
118.0	133.65 273.45	119.9	239.3 (Rwys 16L, 16C, 34C, 34R)	121.7	128.0	
		120.95	239.3 (Rwys 16R, 34L)			



CATEGORY	A	B	C	D
S-ILS 34C	SA CAT I	RA 231/14	150	DA 537
S-ILS 34C	SA CAT II	RA 112/12	100	DA 487

SA CATEGORY I & II ILS - SPECIAL AIRCREW
& AIRCRAFT CERTIFICATION REQUIRED

