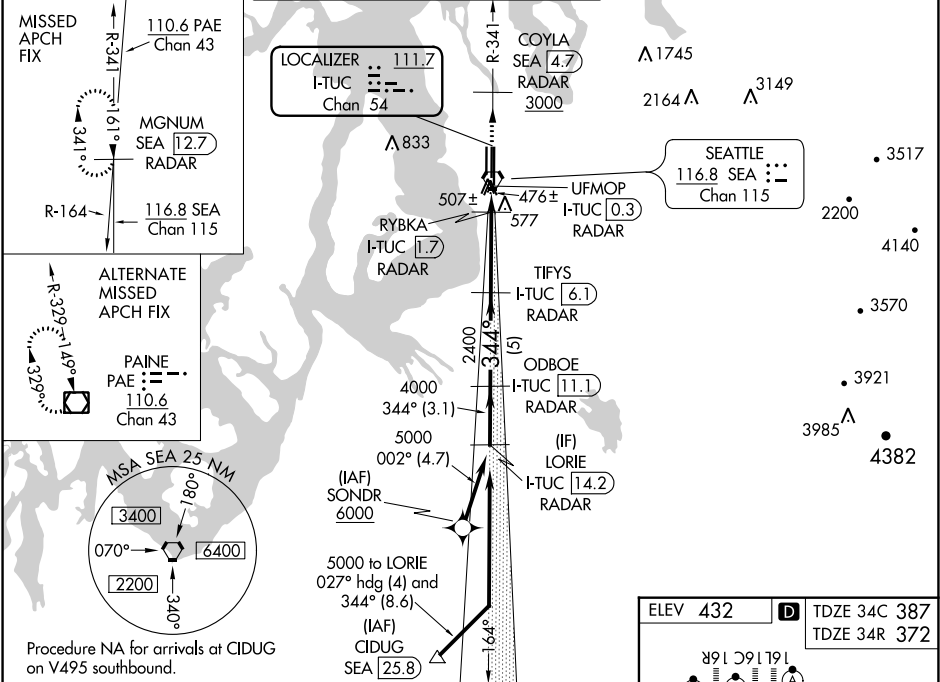


LOC/DME I-TUC 111.7 Chan 54	APP CRS 344°	Rwy Idg TDZE Apt Elev	34C 9426 387 432	34R 11901 372 432
---	------------------------	-----------------------------	--	---

ILS or LOC RWY 34C
SEATTLE-TACOMA INTL (SEA)

DME or RADAR required. From SONDR: RNAV 1-GPS required.	MALSR Rwy 34C/R	MISSED APPROACH: Climb on heading 345° and outbound on SEA VORTAC R-341 to cross COYLA/SEA 4.7 DME/RADAR at or above 3000 then climb to 5000 on SEA VORTAC R-341 to MGNUM/SEA 12.7 DME/RADAR and hold, continue climb-in-hold to 5000.
Inop table does not apply to ALS Rwy 34R. Simultaneous approach authorized with Rwy 34L.		

D-ATIS 118.0	SEATTLE APP CON 133.65 273.45	SEATTLE TOWER 119.9 239.3 (Rwys 16L, 16C, 34C, 34R) 120.95 239.3 (Rwys 16R, 34L)	GND CON 121.7	CLNC DEL 128.0	CPDLC
------------------------	---	--	-------------------------	--------------------------	-------



VGSI and ILS glidepath not coincident (VGSI Angle 3.00/TCH 73).					
LORIE I-TUC [14.2] RADAR	ODBOE I-TUC [11.1] RADAR	TIFYS I-TUC [6.1] RADAR	RYBKA I-TUC [1.7] RADAR	UFMOP I-TUC [0.3] RADAR	MGNUM SEA [12.7]
*LOC only					
5000	4000	2400	1000	0.5	0.5
GS 3.00° TCH 56					
3.1 NM 5 NM 4.3 NM 0.9 NM 0.5					
CATEGORY	A	B	C	D	
S-ILS 34C	604/24		217 (200-½)		
S-LOC 34C	760/24		373 (400-½)		
SIDESTEP 34R	760/50		388 (400-1)		
CIRCLING	1000-1		568 (600-1)		
			1000-1½ 1000-2		
			568 (600-1½) 568 (600-2)		

