

JEFPO ONE DEPARTURE (RNAV)

AL-582 (FAA)

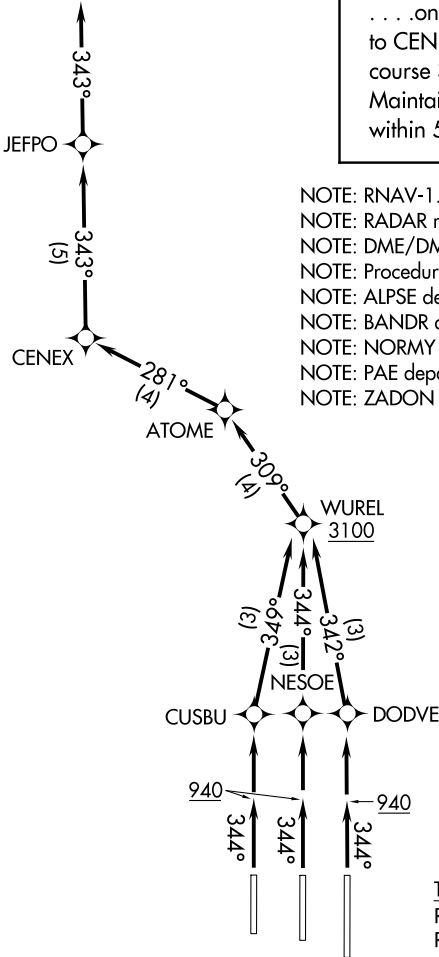
SEATTLE-TACOMA INTL (SEA)
SEATTLE, WASHINGTON

D-ATIS
118.0
CLNC DEL
128.0
CPDLC
GND CON
121.7
SEATTLE TOWER
119.9 239.3 (Rwys 16L/34R, 16C/34C)
120.95 239.3 (Rwy 16R/34L)
SEATTLE DEP CON
120.4 269.125

TOP ALTITUDE:
9000

ALPSE

PAINE
PAE



- NOTE: RNAV-1.
NOTE: RADAR required.
NOTE: DME/DME/IRU or GPS required.
NOTE: Procedure available from 2200 to 0600 local.
NOTE: ALPSE departures expect direct/vectors to ALPSE.
NOTE: BANDR departures expect direct/vectors to BANDR.
NOTE: NORMY departures expect direct/vectors to NORMY.
NOTE: PAE departures expect direct/vectors to PAE VOR/DME.
NOTE: ZADON departures expect direct/vectors to ZADON.

TAKEOFF MINIMUMS
Rwys 16L/C/R: NA, ATC.
Rwys 34L/C/R: Standard with minimum climb
of 500' per NM to 940.

NOTE: Chart not to scale.

JEFPO ONE DEPARTURE (RNAV)