

AL-582 (FAA)

SEATTLE-TACOMA INTL (SEA)  
SEATTLE, WASHINGTON

## MARNR SEVEN ARRIVAL (RNAV) Transition Routes

BUHNR TRANSITION (BUHNR.MARNR7)  
JIGEB TRANSITION (JIGEB.MARNR7)  
ROESH TRANSITION (ROESH.MARNR7)  
TATOOSH TRANSITION (TOU.MARNR7)  
VANCOUVER TRANSITION (YVR.MARNR7)  
VICTORIA TRANSITION (YYJ.MARNR7)

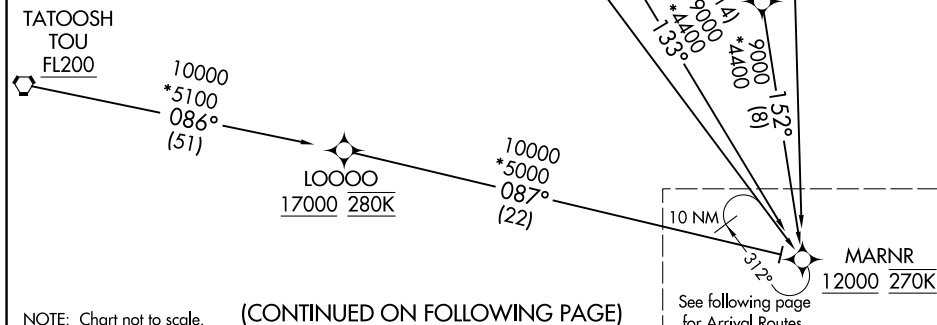
NOTE: RADAR required.

NOTE: RNAV 1.

NOTE: DME/DME/IRU or GPS required.

NOTE: Turbojet aircraft descend via mach number until intercepting 280K. Maintain 280K until slowed by the STAR.

NOTE: Non-RNP AR aircraft landing Rwy 34L/C/R, expect RADAR vectors to final approach course prior to EMMSS.



# MARNR SEVEN ARRIVAL (RNAV) Transition Routes

## (MARNR.MARNR7) 12OCT17

SEATTLE, WASHINGTON  
SEATTLE-TACOMA INTL (SEA)

NW-1, 31 DEC 2020 to 28 JAN 2021