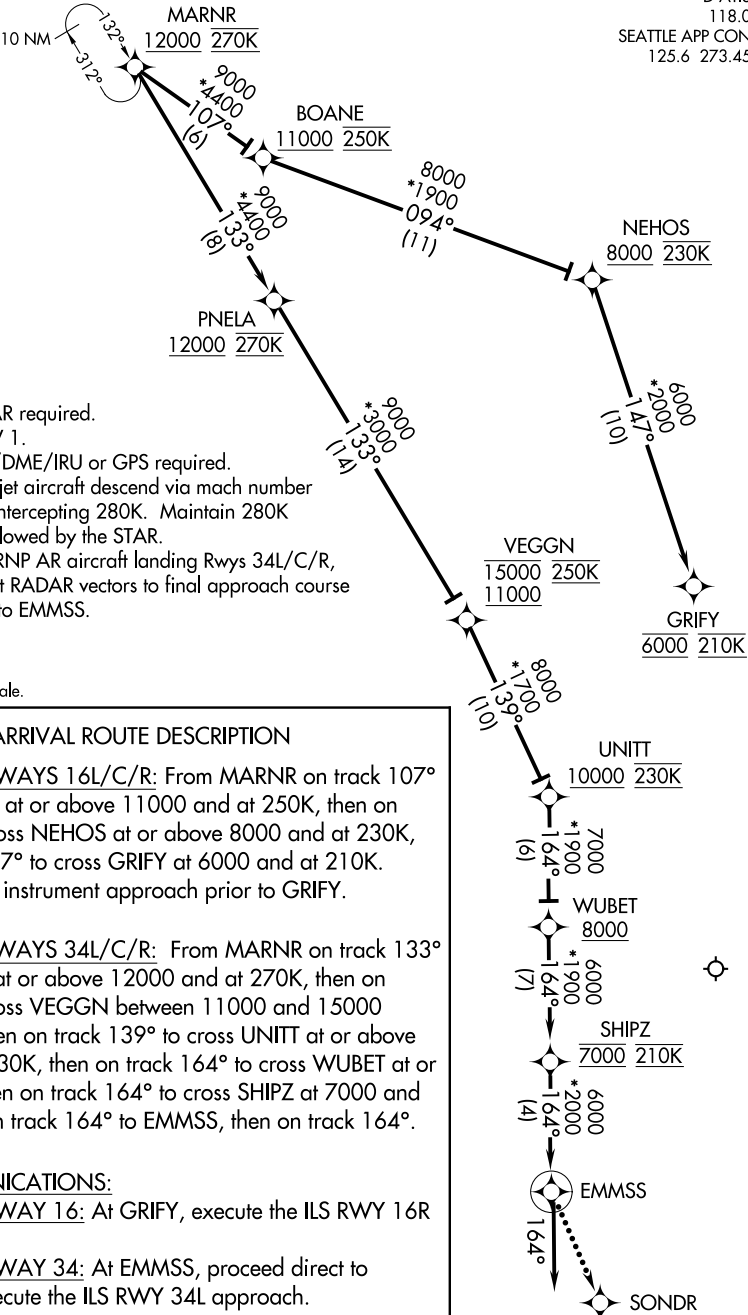


MARNR SEVEN ARRIVAL (RNAV) Arrival Routes

SEATTLE-TACOMA INTL (SEA)  
SEATTLE, WASHINGTON

D-ATIS

118.0  
SEATTLE APP CON  
125.6 273.45



- NOTE: RADAR required.  
NOTE: RNAV 1.  
NOTE: DME/DME/IRU or GPS required.  
NOTE: Turbojet aircraft descend via mach number until intercepting 280K. Maintain 280K until slowed by the STAR.  
NOTE: Non-RNP AR aircraft landing Rws 34L/C/R, expect RADAR vectors to final approach course prior to EMMSS.

NOTE: Chart not to scale.

ARRIVAL ROUTE DESCRIPTION

LANDING RUNWAYS 16L/C/R: From MARNR on track 107° to cross BOANE at or above 11000 and at 250K, then on track 094° to cross NEHOS at or above 8000 and at 230K, then on track 147° to cross GRIFY at 6000 and at 210K. Expect assigned instrument approach prior to GRIFY.

LANDING RUNWAYS 34L/C/R: From MARNR on track 133° to cross PNELA at or above 12000 and at 270K, then on track 133° to cross VEGGN between 11000 and 15000 and at 250K, then on track 139° to cross UNITT at or above 10000 and at 230K, then on track 164° to cross WUBET at or above 8000, then on track 164° to cross SHIPZ at 7000 and at 210K, then on track 164° to EMMSS, then on track 164°.

LOST COMMUNICATIONS:

LANDING RUNWAY 16: At GRIFY, execute the ILS RWY 16R approach.

LANDING RUNWAY 34: At EMMSS, proceed direct to SONDRA and execute the ILS RWY 34L approach.

MARNR SEVEN ARRIVAL (RNAV) Arrival Routes

SEATTLE, WASHINGTON  
SEATTLE-TACOMA INTL (SEA)