

APP CRS	Rwy Idg	9426
344°	TDZE	387
	Apr Elev	432

# RNAV (RNP) Z RWY 34C

SEATTLE-TACOMA INTL (SEA)

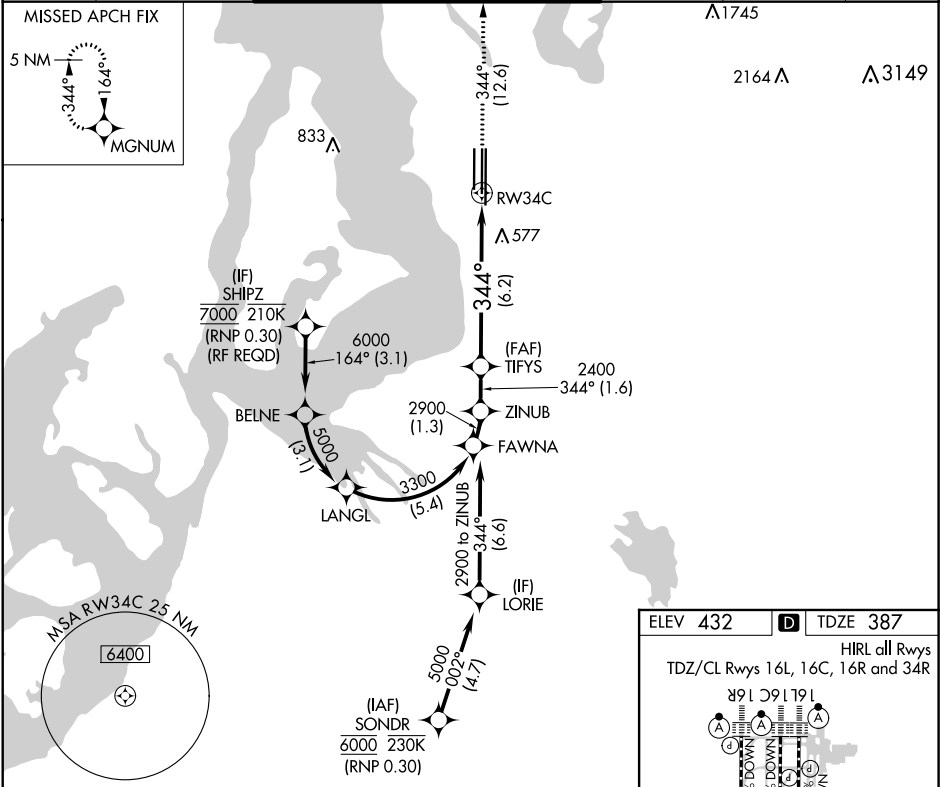
RNP AR APCH.

▼ For uncompensated Baro-VNAV systems, procedure NA below -6°C or above 54°C. Simultaneous approach authorized except arrivals at SHIPZ. Use of FD or AP required during simultaneous operations.

MALSR

MISSED APPROACH: Climb to 5000 on track 344° to MGNUM and hold, continue climb-in-hold to 5000.

D-ATIS	SEATTLE APP CON	SEATTLE TOWER	GND CON	CLNC DEL	CPDLC
118.0	133.65 273.45	119.9 239.3 (Rwys 16L, 16C, 34C, 34R) 120.95 239.3 (Rwys 16R, 34L)	121.7	128.0	



VGSI and RNAV glidepath not coincident (VGSI Angle 3.00/TCH 73).

See planview for multiple IF locations.

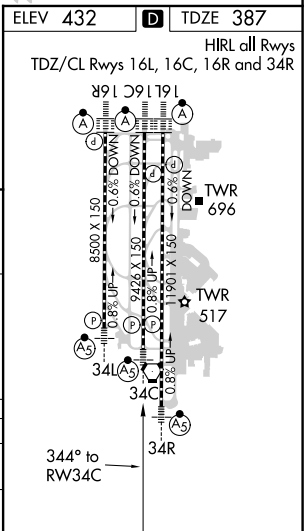
GP 3.00° TCH 56

2900 344° 2400

1.6 NM 6.2 NM

CATEGORY	A	B	C	D
RNP 0.30 DA	829/50 442 (400-1)			

**AUTHORIZATION REQUIRED**



NW-1, 31 DEC 2020 to 28 JAN 2021

NW-1, 31 DEC 2020 to 28 JAN 2021