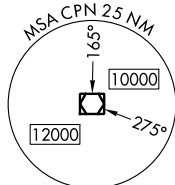


ILS or LOC RWY 15
BERT MOONEY (BTM)


Circling NA northeast of Rwy 15-33. DME required.
S-ILS 15 for inop ALS, increase all Cats visibility to 2½ SM.
#S-ILS 15 for inop ALS, increase Cat C/D visibility to 1 SM.
#S-LOC 15 for inop ALS, increase Cat C/D visibility to 1¾ SM.

MISSED APPROACH: (Do not exceed 190K until 7100) Climb to 7100 then climbing right turn to 11000 direct CPN VOR/DME and hold, continue climb-in-hold to 11000. #Missed approach requires minimum climb of 365 feet per NM to 8700.

UNICOM
123.0 (CTAF) **L**

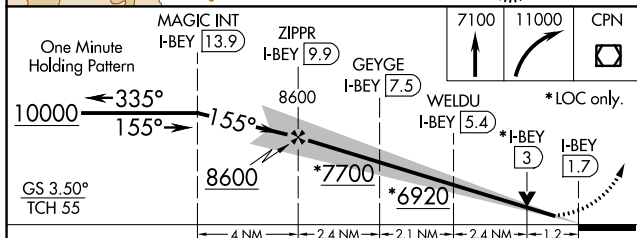
DME REQUIRED

Procedure NA for arrivals at CPN
VOR/DME on V257 southbound

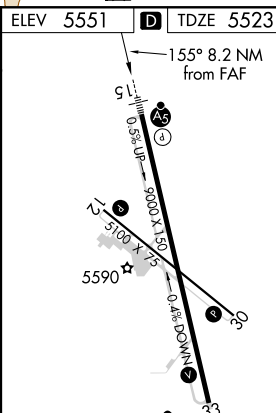
COPPERTOWN
11.6 CPN 
Chap 53

LOCALIZER 110.9
I-BEY
Chan 46

WHITEHALL
13.7 HIA ::
Chan 84



CATEGORY	A	B	C	D
S-ILS 15#	5778-1/2	255 (300-1/2)	5848-1/2	325 (300-1/2)
S-ILS 15	6280-17/8 757 (800-17/8)			
S-LOC 15	6500-3/4 977 (1000-3/4)	6500-1 977 (1000-1)	6500-2 1/2	977 (1000-2 1/2)
C CIRCLING	6660-1 1/4 1109 (1200-1 1/4)	6660-1 1/2 1109 (1200-1 1/2)	7060-3 1509 (1600-3)	7120-3 1569 (1600-3)
WELDU FIX MINIMUMS				
S-LOC 15#	6020-1/2	497 (500-1/2)	6020-1	497 (500-1)



REIL Rwys 12 and 30 **L** ³³
MIRL Rwys 12-30 and 15-33 **L**

FAF to MAP 8.2 NM

Knots	60	90	120	150	180
Min:Sec	8:12	5:28	4:06	3:17	2:44