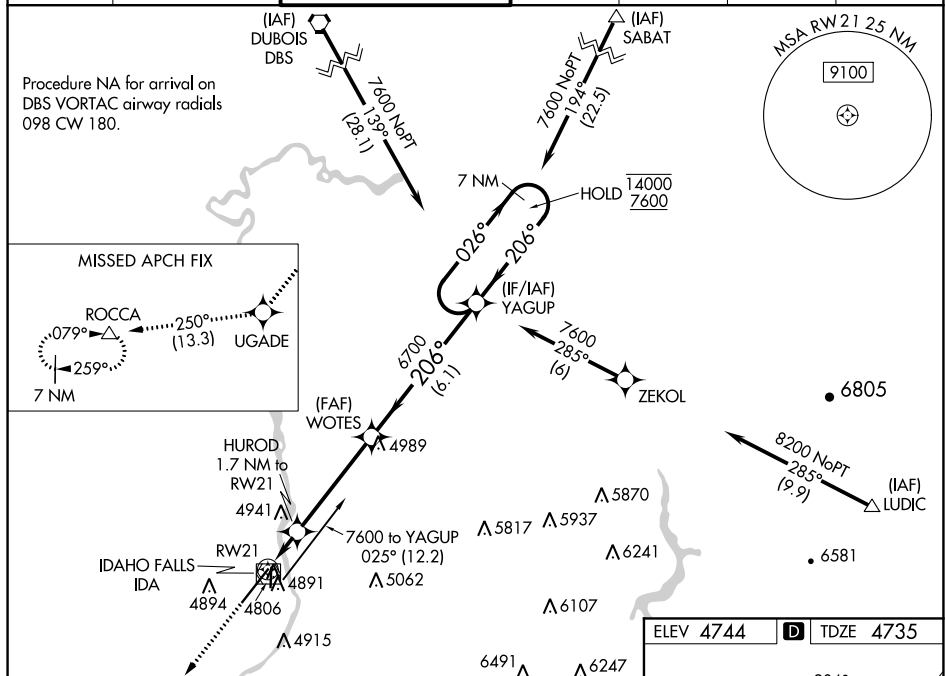


WAAS CH 40111 W21A	APP CRS 206°	Rwy Idg 9002 TDZE 4735 Apt Elev 4744
--	------------------------	---

RNAV (GPS) Y RWY 21
IDAHO FALLS RGNL (IDA)

RNP APCH.			MALSR		MISSED APPROACH: Climb to 7500 direct UGADE and on track 250° to ROCCA and hold.	
<div><div><div></div><div></div></div><div>For uncompensated Baro-VNAV systems, LNAV/VNAV NA below -27°C or above 49°C. For Inop AL increase LNAV/VNAV visibility all Cats to RVR 4500, LNAV visibility Cats C/D to RVR 5500. #RVR 1800 authorized with the use of FD or AP or HUD to DA.</div></div>			<div><div><div></div><div></div></div><div>AS</div></div>			
ATIS 135.325	SALT LAKE CENTER 128.35 239.25	IDAH0 FALLS TOWER★ 118.5 (CTAF) 0 257.8	GND CON 121.7	CINC DEL 121.7	GCO 121.725	UNICOM 122.95



7500 ↑	UGADE ✦	tr 250°	ROCCA △				
* LNAV only	HUORD 1.7 NM to RW21 * 0.9 NM to RW21 RW21 5320*			6700	206°	026° → 14000 ← 206° 7600	GP 3.00° TCH 49°
CATEGORY	A		B		C		D
LPV DA#	4935/24		200 (200-½)				
LNAV/VNAV DA	5016/24		281 (300-½)				
LNAV MDA	5060/24 325 (400-½)		5060/40 325 (400-¾)				
C CIRCLING	5200-1 456 (500-1)	5300-1 556 (600-1)	5400-1¾ 656 (700-1¾)		5420-2¼ 676 (700-2¼)		

