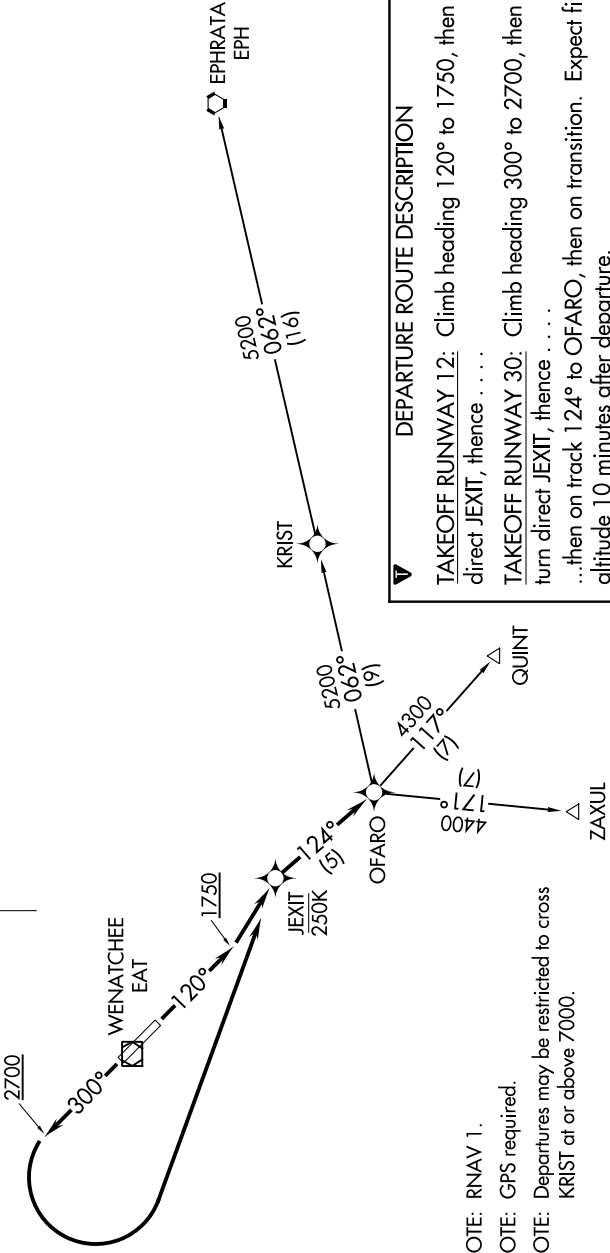


NW-1, 31 DEC 2020 to 28 JAN 2021

SEATTLE CENTER  
126.1 291.6  
UNICOM  
123.0  
ASOS  
119.925



TOP ALTITUDE:  
ASSIGNED BY ATC

(NOTES CONTINUED ON FOLLOWING PAGE)

DEPARTURE ROUTE DESCRIPTION

**TAKEOFF RUNWAY 12:** Climb heading 120° to 1750, then direct JEXIT, thence . . . .

**TAKEOFF RUNWAY 30:** Climb heading 300° to 2700, then left turn direct JEXIT, thence . . . .

...then on track 124° to OFARO, then on transition. Expect filed altitude 10 minutes after departure.

- EPHRATA TRANSITION (OFARO2.EPH)
- QUINT TRANSITION (OFARO2.QUINT)
- ZAXUL TRANSITION (OFARO2.ZAXUL)

NOTE: RNAV 1.

NOTE: GPS required.

NOTE: Departures may be restricted to cross KRIST at or above 7000.

**TAKEOFF MINIMUMS**

Rwy 12: Standard with minimum climb of 550' per NM to 3200.

Rwy 30: Standard with minimum climb of 500' per NM to 4000.

NOTE: Chart not to scale.