

NW-1, 31 DEC 2020 to 28 JAN 2021

SEATTLE CENTER
126.1 291.6
UNICOM
123.0
ASOS
119.925

**TOP ALTITUDE:
ASSIGNED BY ATC.**

DEPARTURE ROUTE DESCRIPTION

TAKEOFF RUNWAY 12: Climb heading 120° to 3700, then left turn direct PREBE, thence ...

TAKEOFF RUNWAY 30: Climb heading 300° to 1750, then direct PREBE, thence ...

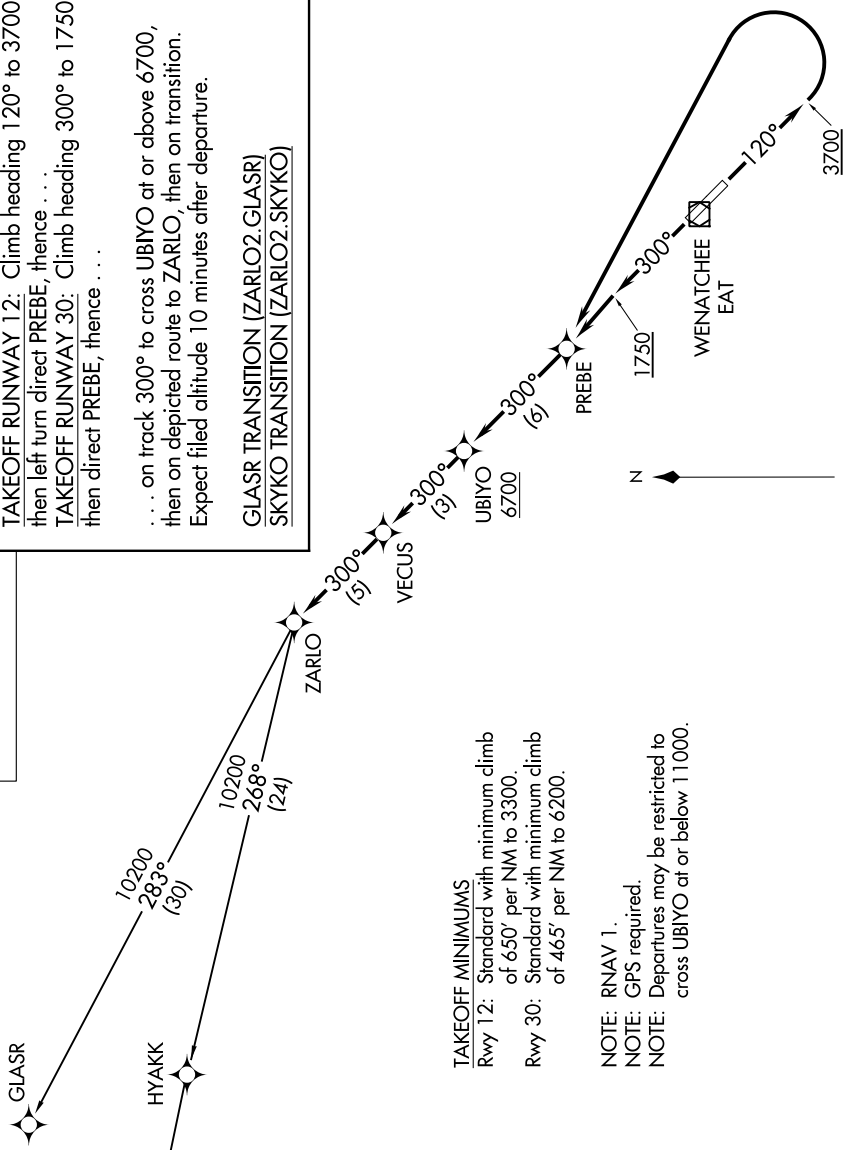
... on track 300° to cross UBIYO at or above 6700, then on depicted route to ZARLO, then on transition. Expect filed altitude 10 minutes after departure.

GLASR TRANSITION (ZARLO2.GLASR)
SKYKO TRANSITION (ZARLO2.SKYKO)

ZARLO TWO DEPARTURE (RNAV)
(ZARLO2.ZARLO) 10NOV16

AL-641 (FAA)

PANGBORN MEMORIAL (EAT)
WENATCHEE, WASHINGTON



WENATCHEE, WASHINGTON
PANGBORN MEMORIAL (EAT)

NW-1, 31 DEC 2020 to 28 JAN 2021