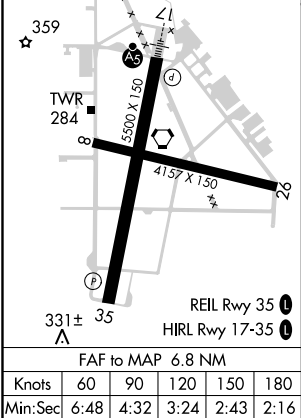
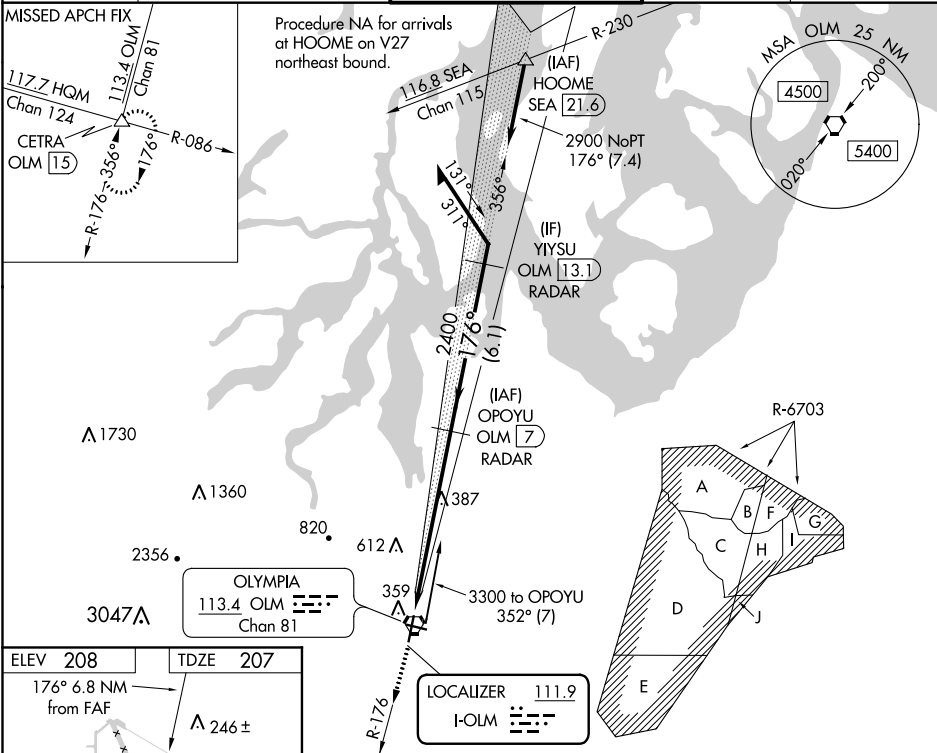


LOC I-OLM	APP CRS	Rwy Idg	5500
111.9	176°	TDZE	207
		Apt Elev	208

ILS or LOC RWY 17  
OLYMPIA RGNL (OLM)

<p><b>⚠</b> DME or RADAR required. For inop ALS, increase S-LOC 17 Cat C/D visibility to 1½ SM.</p>	<p><b>MAISR</b></p> <p><b>AS</b></p>	<p><b>MISSED APPROACH:</b> Climb to 1400 then climb to 5500 on OLM VORTAC R-176 to CETRA INT/OLM 15 DME and hold, continue climb-in-hold to 5500.</p>
---	--------------------------------------	---

<p><b>ATIS★</b></p> <p><b>135.725</b></p>	<p><b>SEATTLE APP CON</b></p> <p><b>121.1 290.9</b></p>	<p><b>OLYMPIA TOWER★</b></p> <p><b>124.4(CTAF) 254.25</b></p>	<p><b>GND CON</b></p> <p><b>121.6</b></p>	<p><b>UNICOM</b></p> <p><b>122.95</b></p>
---	---	---	---	---



<p>1400</p> <p>5500</p> <p>CETRA</p> <p>OLM R-176</p>	<p>3300</p> <p>2400</p> <p>2900</p> <p>356°</p> <p>176°</p> <p>2400</p> <p>6.8 NM</p>	<p>REIL Rwy 35</p> <p>HIRL Rwy 17-35</p> <p>FAF to MAP 6.8 NM</p>	<p>Remain within 10 NM</p> <p>GS 3.00°</p> <p>TCH 53</p>
<p><b>CIRCLING</b></p>	<p><b>S-ILS 17</b></p> <p><b>S-LOC 17</b></p>	<p><b>407-½ 200 (200-½)</b></p> <p><b>680-½ 473 (500-½)</b></p> <p><b>680-1 473 (500-1)</b></p>	<p><b>720-1 512 (600-1)</b></p> <p><b>860-1 652 (700-1)</b></p> <p><b>1020-2½ 812 (900-2½)</b></p> <p><b>1020-2¾ 812 (900-2¾)</b></p>