

WAAS CH 93716 W22A	APP CRS 224°	Rwy Idg 7008 TDZE 6817 Apt Elev 6817
--	------------------------	---

RNAV (GPS) RWY 22

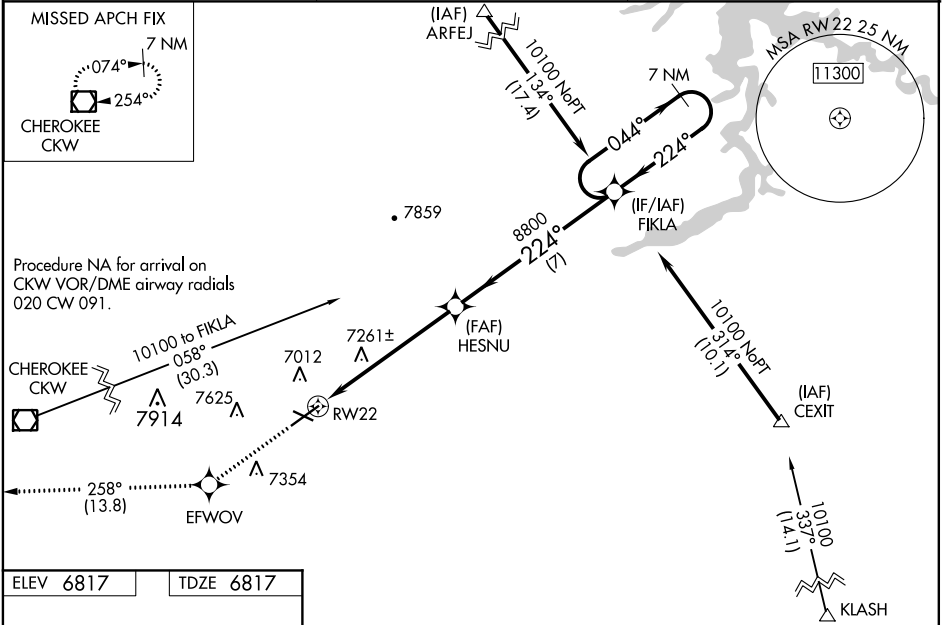
RAWLINS MUNI/HARVEY FIELD (RWL)

▼
▲

Baro-VNAV NA when using Saratoga altimeter setting. For uncompensated Baro-VNAV systems, LNAV/VNAV NA below -28°C (-18°F) or above 44°C (111°F). Circling NA northwest of Rwy 4-22. DME/DME RNP-0.3 NA. VDP NA when using Saratoga altimeter setting. When local altimeter setting not received, use Saratoga altimeter setting and increase all DA 91 feet, and LPV visibility ¾ mile, and LNAV/VNAV visibility 1 mile; increase all MDA 100 feet and LNAV visibility Cat B ¼ mile, Cats C and D ½ mile, Circling visibility Cats B and C ¼ mile. Helicopter visibility reduction below ¾ SM NA.

MISSED APPROACH:
Climb to 11700 direct EFWOV and on track 258° to CKW VOR/DME and hold, continue climb-in-hold to 11700.

ASOS 118.525	DENVER CENTER 132.1 254.35	UNICOM 123.0 (CTAF) 0
------------------------	--------------------------------------	---------------------------------



ELEV 6817	TDZE 6817
------------------	------------------

224° to RW22

6772

6790

4322 X 60

7008 X 100

0.7 UP

1.0 UP

11700	EFWOV	tr 258°	CKW
-------	-------	---------	-----

*INAV only.

HESNU

8800

224°

8800

7 NM Holding Pattern

FIKLA

044°

224°

10100

GP 3.00° TCH 53

2.1	4 NM	7 NM
-----	------	------

CATEGORY	A	B	C	D
LPV DA		7131-1	314 (400-1)	
LNAV/VNAV DA		7637-3	820 (900-3)	
LNAV MDA	7520-1	703 (800-1)	7520-2	703 (800-2)
C CIRCLING	7520-1 703 (800-1)	7540-1 723 (800-1)	7660-2½ 843 (900-2½)	7900-3 1083 (1100-3)