


WAAS CH <b>61115</b> <b>W28A</b>	APP CRS <b>284°</b>	Rwy Idg <b>8204</b> TDZE <b>5459</b> Apt Elev <b>5528</b>
--	------------------------	---


RNAV (GPS) RWY 28  
CENTRAL WYOMING RGNL (RIW)

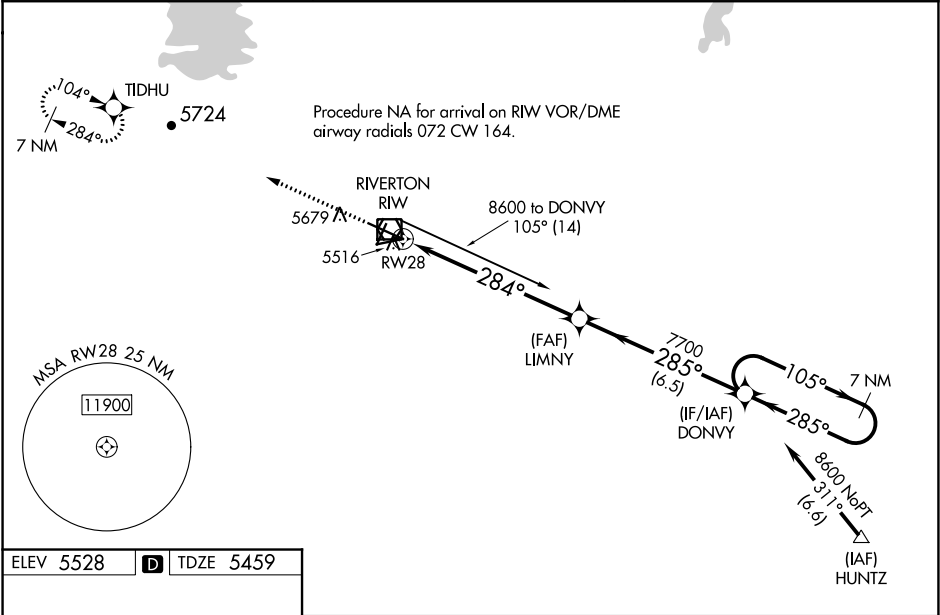
**V** DME/DME RNP-0.3 NA. Baro-VNAV and VDP NA when using Lander altimeter setting.  
**A** For uncompensated Baro-VNAV systems, LNAV/VNAV NA below -27°C (-16°F) or above 48°C (118°F). For inop MALSR, increase LNAV/VNAV all Cats visibility to ¾ mile and LNAV Cat C and D visibility to 1 mile. When local altimeter setting not received, use Lander altimeter setting: increase LPV DA to 5713 feet, LNAV/VNAV DA to 5763 and all visibilities ½ mile; increase all MDA 60 feet and LNAV Cat C and D visibility ½ mile. For inop MALSR, when using Lander altimeter setting, increase LPV all Cats visibility to ¾ mile and LNAV/VNAV all Cats visibility to 1 mile.

MALSR

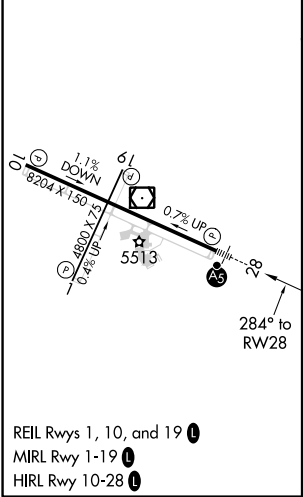


MISSED APPROACH:  
Climb to 7900 direct  
TIDHU and hold.

ASOS <b>121.425</b>	SALT LAKE CENTER <b>133.25 285.6</b>	UNICOM <b>122.8 (CTAF)</b> 
------------------------	---	---



ELEV 5528	<b>D</b>	TDZE 5459
-----------	----------	-----------



7900 TIDHU

\* LNAV only


LIMNY 7700

DONVY 7700

8600

GP 3.00°  
TCH 50

Distances: 1 NM, 5.9 NM, 6.5 NM

CATEGORY	A	B	C	D
LPV DA	5659-½ 200 (200-½)			
LNAV/VNAV DA	5709-½ 250 (200-½)			
LNAV MDA	5820-½	361 (400-½)	5820-⅝	361 (400-⅝)
 CIRCLING	6000-1	472 (500-1)	6000-1½ 472 (500-1½)	6120-2 592 (600-2)

NW-1, 31 DEC 2020 to 28 JAN 2021

NW-1, 31 DEC 2020 to 28 JAN 2021