

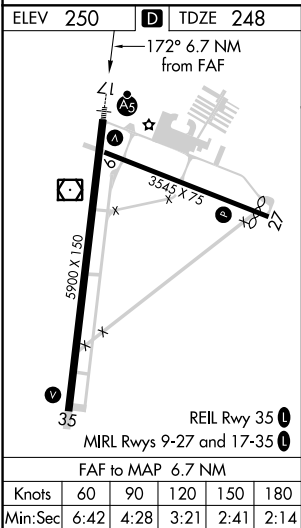
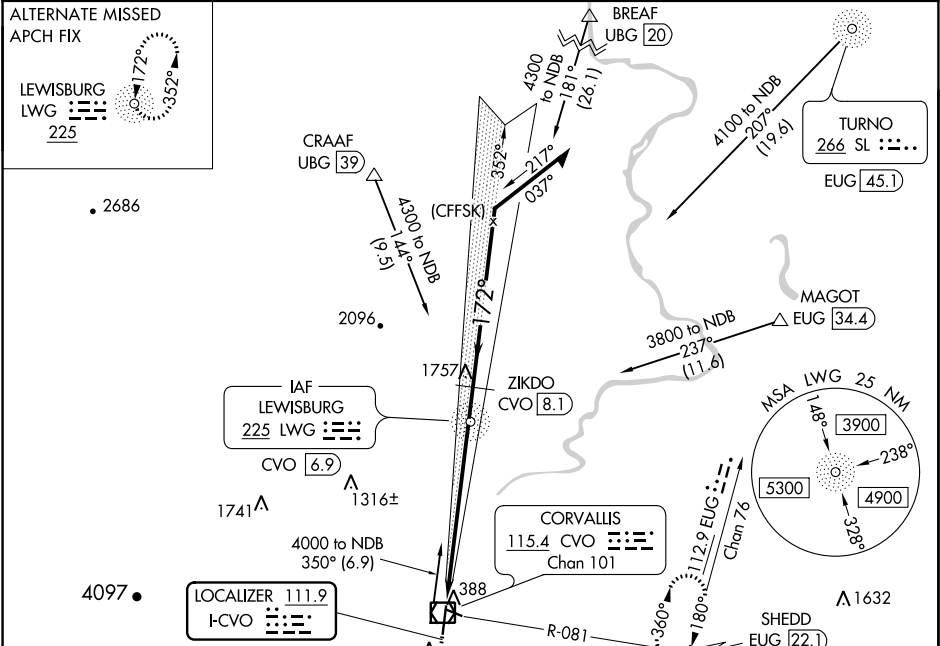
LOC I-CVO <b>111.9</b>	APP CRS <b>172°</b>	Rwy Idg TDZE Apt Elev	<b>5900</b> <b>248</b> <b>250</b>
---------------------------	------------------------	-----------------------------	---

ILS or LOC RWY 17

CORVALLIS MUNI (CVO)

ADF required for procedure entry. ADF required for LOC only.	MALSR 	MISSED APPROACH: Climb to 900 then climbing left turn to 3000 on heading 050° and on CVO VOR/DME R-081 to SHEDD INT/EUG 22.1 DME and hold, continue climb-in-hold to 3000.
When local altimeter setting not received, procedure NA. For inop ALS, increase S-LOC 17 Cat C/D visibility to 2 SM.		

AWOS-3PT <b>135.775</b>	CASCADE APP CON ★ <b>127.5 348.7</b>	UNICOM <b>123.075 (CTAF) 0</b>
----------------------------	---	-----------------------------------



900	3000	SHEDD	LWG NDB	
↑	hdg 050°	CVO R-081	CVO 6.9	
VGSI and ILS glidepath not coincident (VGSI Angle 3.00/TCH 45).				
*LOC only.				
CATEGORY	A	B	C	D
S-ILS 17	448-½ 200 (200-½)			
S-LOC 17	1000-½ 752 (800-½)	1000-¾ 752 (800-¾)	1000-1¾ 752 (800-1¾)	752 (800-1¾)
CIRCLING	1000-1 750 (800-1)	1000-1¼ 750 (800-1¼)	1000-2¼ 750 (800-2¼)	1080-2¾ 830 (900-2¾)