

WAAS CH <b>78311</b> <b>W17A</b>	APP CRS <b>172°</b>	Rwy Idg <b>5900</b> TDZE <b>248</b> Apt Elev <b>250</b>
--	------------------------	---

RNAV (GPS) RWY 17

CORVALLIS MUNI (CVO)

▼

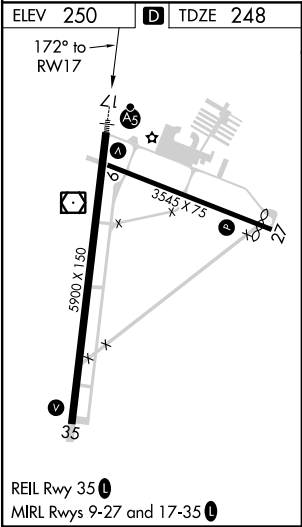
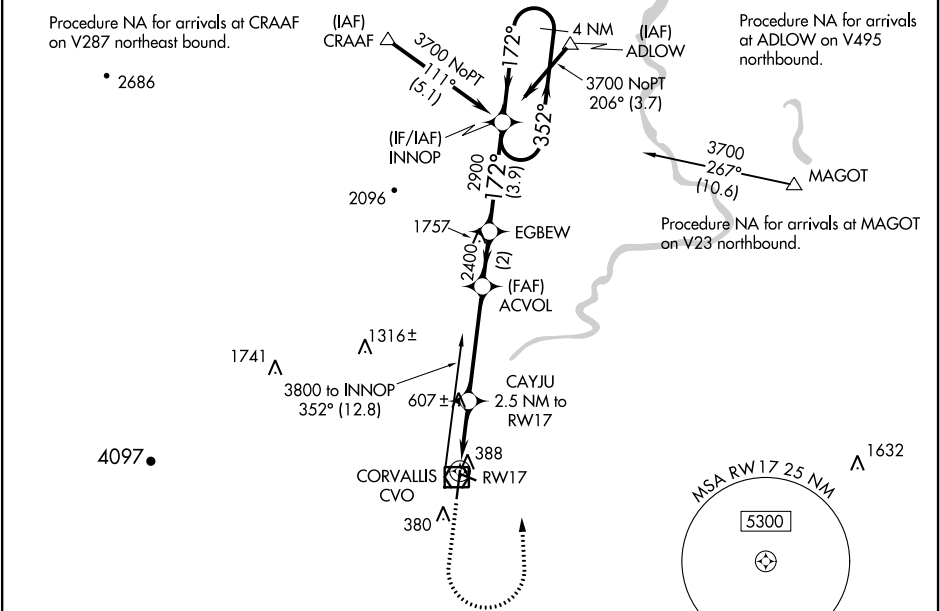
▲ NA

For uncompensated Baro-VNAV systems, LNAV/VNAV NA below -15°C (5°F) or above 54°C (130°F). DME/DME RNP-0.3 NA.  
For inop ALS, increase LNAV/VNAV all Cats visibility to 1 SM and increase LNAV Cat C/D visibility to 1¼ mile.

MALSR

MISSED APPROACH: Climb to 1100 then climbing left turn to 3700 direct INNOP and hold, continue climb-in-hold to 3700.

AWOS-3PT <b>135.775</b>	CASCADE APP CON ★ <b>127.5 348.7</b>	UNICOM <b>123.075 (CTAF) 0</b>
----------------------------	---	-----------------------------------



1100	3700	INNOP	VGSI and RNAV glidepath not coincident (VGSI Angle 3.00/TCH 45).			
*LNAV only		CAYJU 2.5 NM to RW17	ACVOL	EGBEW	INNOP	4 NM Holding Pattern
*1.8 NM to RW17		1080*	2400	2900	172°	352° → 3700
1.8 NM		0.7	4.1 NM	2 NM	3.9 NM	GP 3.00° TCH 45
CATEGORY	A	B	C	D		
LPV DA	448-½		200 (200-½)			
LNAV/VNAV DA	571-⅝		323 (400-⅝)			
LNAV MDA	860-½		612 (700-½)		860-⅔	612 (700-1⅓)
CIRCLING	860-1		610 (700-1)		920-1¾ 670 (700-1¾)	1080-2¾ 830 (900-2¾)