

WAAS CH 40228 W16A	APP CRS 162°	Rwy Idg TDZE Apt Elev	7000 4202 4252
--	------------------------	-----------------------------	---

RNAV (GPS) RWY 16

WORLAND MUNI (WRL)

⚠

⚠

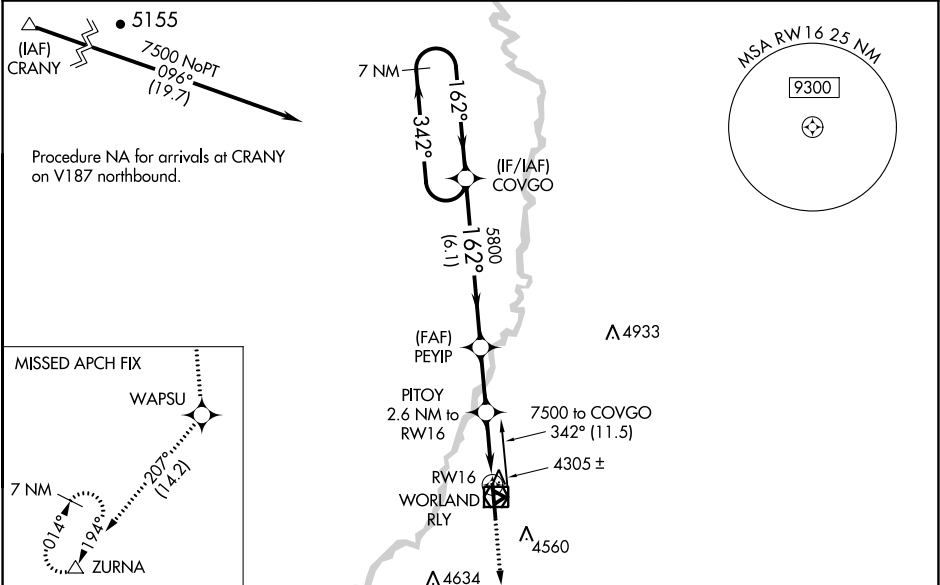
❄

-33°C

For uncompensated Baro-VNAV systems, LNAV/VNAV NA below -32°C (-25°F) or above 17°C (62°F). DME/DME RNP-0.3 NA. VDP and Baro-VNAV NA with Greybull altimeter setting. When local altimeter not received, use Greybull altimeter setting and increase all DA/MDA 140 feet, and all visibilities ½ mile. Helicopter visibility reduction below ¾ SM NA.

MISSED APPROACH: Climb to 9600 direct WAPSU and on track 207° to ZURNA and hold, continue climb-in-hold to 9600.

ASOS 135.475	SALT LAKE CENTER 133.25 285.6	UNICOM 123.05 (CTAF) 0
------------------------	---	---



VGSI and RNAV glidepath not coincident (VGSI Angle 3.00/TCH 41).				9600	WAPSU	ZURNA	ELEV 4252	TDZE 4202
7 NM Holding Pattern				↑	✦	tr 207°		
COVGO								
7500 ← 342° 162° →								
GP 3.00° TCH 55								
PEYIP 5800								
PITOI 2.6 NM to RW16								
*5040								
*1.1 NM to RW16								
RW16								
6.1 NM								
2.3 NM								
1.5 NM								
1.1 NM								
CATEGORY	A	B	C	D				
LPV DA	4452-¾ 250 (200-¾)							
LNAV/VNAV DA	4494-⅞ 292 (300-⅞)							
LNAV MDA	4560-1 358 (400-1)		4560-1½ 358 (400-1½)					
CIRCLING	4880-1 628 (700-1)	4900-1 648 (700-1)	4900-1¾ 648 (700-1¾)	4900-2 648 (700-2)				

162° to RW16

91

1.1° UP

4223

2502 X 60

10° UP

87

0.5° UP

7000 X 100

2241 X 60

34

REIL Rwy 16 and 34

MIRL Rwy 16-34